



On-line PICASSO PROJECT

**Comprehensive Catalogue Raisonné
Prof. Dr. Enrique Mallen**

1930



Baigneuse assise (Olga). Paris. [Early] January/1930. Oil on canvas. 163,2 x 129,5 cm. The Museum of Modern Art, NYC. (Inv 82.50). Mrs. Simon Guggenheim Fund, 1950.

OPP.30:002; P.IV:217; PP.30:002; Z.VII:306; AB.07:49p; AB.39a*:231; AB.46:163p; AB.46:7; AB.57*:n/a; AP.92:28; AS.60:37; BS.55:393p; CH.10*:179p; DT.78:47; EC.02:495; FC.08*:12; FP.73:235p; GP.32*:190; GP.96:162p; HD.04:42p; HJ.83:99p; HJ.96:123p; JF.03:7.13; JL.06:151p; JL.71:59p; JR.07:393p; JS.46:12; KZ.32*:188; MC.11:19p; MG.80:143p; MR.53:89p; MS.00a:33p; NY.41b*:n/a; NY.48a*:n/a; NY.54f*:n/a; NY.64c*:n/a; PA.19f:139p; PD.09:269p; PD.65:141p; PH.45a*:n/a; RJ.03:24; RK.69:31; RL.89:113p; RP.60*:124; RP.81:13.1; RP.91:33; SG.06:109p; SG.96:3.14; SS.76:300; TC.13:5.22; TH.75:131; TU.15:105p; UP.00:609; UW.84:100p; WR.72*:133p; WR.80*:279p; WR.96:64p; WW.91:357p; YB.99*:212

Pages de carnet avec des messages. Paris. Early/1930. Ink on paper. S/U. Musée Picasso, Paris. (Inv 515AP/A).

OPP.30:012





Portrait de Marie-Thérèse à vingt ans. [Paris]. [Early]/1930.
Pen on paper. 62,7 x 47,5 cm. Private collection.

OPP.30:122; P.IV:838; PP.30:028a; MD.02:170p; WR.96:345p

Figure. Paris. 4-January/1930. Oil on panel. [64 x 47] 66 x 49,2 cm. The Art Institute of Chicago. (Inv 1955.748).
Gift of Florene May Schoenborn and Samuel A. Marx;
Wilson L. Mead Fund.

OPP.30:069; PP.30:001; Z.VII:304; CH.55b*:n/a;
CH.68a*:34; CH.84b*:208p; GP.32*:192; KZ.32*:191;
LO.31*:33; LO.36b*:300; LO.53a*:12;
NY.31b*:17/20/23; NY.31g*:23; PA.19f:138p;
SD.13a*:93; SD.13b:60p; TC.13:5.13





Acrobate. Paris. 12-January/1930. Graphite on Ingres paper. 23,5 x 30,5 cm. Musée Picasso, Paris. Dation 1979. Sketchbook 18.

OPP.30:106; MPP:1875.63r; PP.30:005a; AB.05b:135; BL.96:38.63r

Acrobate au poignard. Paris. 12-January/1930. Graphite on Ingres paper. 23,5 x 30,5 cm. Musée Picasso, Paris. Dation 1979. Sketchbook 18.

OPP.30:107; MPP:1875.64r; PP.30:005b; AB.05a:48; BL.96:38.64r; TE.21*:179





Acrobate au poignard. Paris. 12-January/1930.
Graphite on Ingres paper. 23,5 x 30 cm. Musée
Picasso, Paris. Dation 1979. Sketchbook 18.

OPP.30:141; MPP:1875.65r; PP.30:005c;
BL.96:38.65r; GR.90:42p

Inscription. Paris. 12-January/1930.
Graphite on Ingres paper. 23,5 x 30,5 cm.
Musée Picasso, Paris. Dation 1979.
Sketchbook 18.

OPP.30:146; MPP:1875.66r; BL.96:38.66r





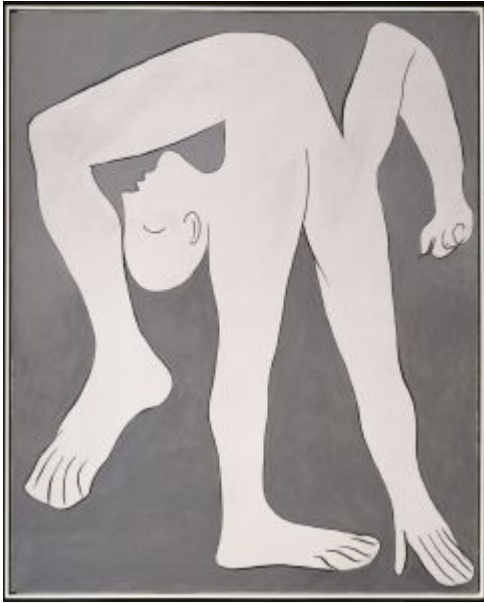
Acrobate. Paris. 12-January/1930. Graphite on Ingres paper. 23,5 x 30,5 cm. Musée Picasso, Paris. Dation 1979. Sketchbook 18.

OPP.30:147; MPP:1875.62r; PP.30:005; BL.96:38.62r

Tête. Paris. 12-January/1930. Oil on wood panel [OIC]. 63 x 40 cm. Private collection.

OPP.30:171; Z.VII:312; PA.19f:136p





L'acrobate. Paris. 18-January/1930. Oil on canvas. 162 x 130 cm. Musée Picasso, Paris. Dation 1979.

OPP.30:004; MPP:120; P.IV:210; PP.30:007; Z.VII:310; AB.05a*:51; AB.12*:173p; AB.39a*:232; AB.46:166p; BD.16*:49; DC.87:386; DD.61:214p; DO.07:21p; GA.14:135p; GR.90:45p; JF.03:8.7; JO.06*:n/a; LP.99:123p; MA.01a*:n/a; MA.08a*:n/a; ME.44*:n/a; ME.82a*:48; MN.80*:n/a; MP.02*:167; MP.85:106; NP.17*:n/a; OW.13:60p; PA.04d*:n/a; PA.18e*:123; PA.19e*:27; PA.79a*:173; RK.69:32; SF.09:116p; SS.76:146; SY.11*:n/a; TH.75:117; UP.00:605; UW.84:101p; WR.80*:280p; WW.91:331p; YB.99*:32

Femme acrobate. Paris. 19-January/1930. Oil on plywood. 64 x 49 cm. Acquavella Galleries, NY. Formerly Marina Picasso Collection. (Inv 012540).

OPP.30:003; P.IV:206; PP.30:008; Z.VII:307; AB.05a*:50; CG.12*:36; GR.90:45p; JR.85*:69; MP.81*:154; PD.02*:40; RP.11*:121p; SS.76:152; UW.91*:29; YB.99*:173





Femme acrobate. Paris. 19-January/1930. Oil on wood (armoire door). 68,5 x 58,5 cm. Museo Picasso, Málaga. On temporary loan from Fundación Almine & Bernard Ruiz-Picasso para el Arte. (Inv P2.60).

OPP.30:052; P.IV:209; PP.30:009; Z.VII:308; CG.12*:37; DO.07*:196; GA.00*:51; GR.90:45p; GS.03:2.11; JR.07:388p; LW.15*:139p; MG.04c*:10; MI.01*:75; RK.69:33; SS.76:152; TE.21:38p; UW.84:101p

Le peintre. Paris. 20-January/1930. Oil on cardboard. 50 x 65 cm. Moderna Museet, Stockholm. (Inv MOM 448). Gift through bequest from Gerard Bonnier, 1989. Formerly Hope and Abraham Melamed Collection, Milwaukee.

OPP.30:108; PP.30:010; Z.VII:309; DE.98:129p; GR.90:45p; JB.12:8; JL.14*:51; JR.85:5; WR.68*:180





Composition avec femme aux cheveux mi-longs. [Paris]. 21-January/1930. Oil on panel. 49 x 64,2 cm. Sotheby's. #1, N09139, 05/07/14. Formerly Jan Krugier; Marina Picasso Collection. (Inv 12542).

OPP.30:055; P.IV:207; PP.30:011; Z.VII:318; BA.03a*:139; GR.90:45p; JR.85*:68; KB.99*:14; LO.06a*:136; MB.84*:93; MP.81*:155; MP.83*:123; PD.02*:52; TS.90*:P26; VE.81*:206; WS.95b*:4

Figure (Femme assise). Paris. [Early] 24-January/1930. Oil on wood panel. 65,6 x 49,2 cm. Fondation Beyeler, Riehen/Basel. (Inv 60.3).

OPP.30:006; PP.30:004; Z.VII:314; AB.05a*:15; AH.13*:63; BA.23*:139p; GC.96:207p; JL.71:76p; KB.01*:101; PA.19f*:67; UW.91*:30; WW.91:334p





Figure (Tête de femme). Paris. 25-January/1930. Oil on wood panel. 64,4 x 47,3 cm. Los Angeles County Museum of Art. (Inv M.2005.70.103). Partial, fractional and promised gift of Janice and Henri Lazarof. Formerly Christie's. #52, 7068, 15/05/90; Galerie Rosengart, Lucerne.

OPP.30:007; PP.30:012; Z.VII:299; GP.32*:194; KZ.32*:192; LO.31*:34; NT.44*:14; NY.31g*:18; NY.48a*:n/a; NY.56e*:n/a; NY.66d*:n/a; PA.19f:138p; PV.83*:19; UW.91*:31

Figure (Tête). Paris. 26-January/1930. Oil on wood panel. [64 x 47] 62,2 x 46,4 cm. Cincinnati Art Museum. (Inv 1991.312). Gift of Thomas C. and Emily F. Adler.

OPP.30:103; PP.30:013; Z.VII:298; GP.32*:191; KZ.32*:193; PA.19f:138p; RP.11:20p; TB.10*:65





Profil. Paris. 27-January/1930. Oil & charcoal on cradled panel. [64 x 47] 66 x 50,8 cm. Christie's. #47C, 20180, 11/11/21. Formerly University of California, Los Angeles Art Galleries. Gift of Stanley N. Barbee.

OPP.30:104; PP.30:014; Z.VII:303; DK.61*:24; GP.32*:193; KZ.32*:194; NY.31b*:22; PA.19f:138p; SF.60b*:n/a

Femme. Paris. 1-February/1930. Oil on wood panel. 64 x 47 cm. Sotheby's. #17, N08741, 05/03/11. Formerly Private collection, San Francisco.

OPP.30:009; P.IV:218; PP.30:015; Z.VII:300; BK.90*:n/a; BS.74*:40; CH.37a*:33; GP.32*:195; KZ.32*:195; LO.78a*:9.63a; MN.75*:22/57; NY.31g*:17; PA.19f:139p; PA.19f:32p; PA.79c*:161a; RI.41*:183; SE.79*:236; SF.39a*:Y-203; SF.98*:n/a





Tête sur fond rouge. Paris. 2-February/1930. Oil on wood panel [canvas]. 26 x 21 cm. Musée Picasso, Paris. Dation 1979.

OPP.30:049; MPP:121; P.IV:213; PP.30:016; Z.VII:301; AB.05a*:66; AB.05b*:163; BA.17*:157p; MP.85:107; PA.19f:140p; PA.79a*:175; UP.00:607

Figure. Paris. 2-February/1930. Oil & charcoal on panel. 66 x 49 cm. Christie's. #106, 15470, 02/27/18.

OPP.30:105; PP.30:017; Z.VII:302; NY.31b*:n/a; PA.19f:139p





1ere de couverture. Paris. 2-February/1930. Ink on paper. 20,5 x 24,5 cm. Fundación Almine & Bernard Ruiz-Picasso para el Arte. Carnet 17.

OPP.30:169; LO.18*:156p

Quatre têtes. Paris. 2-February/1930. Ink on paper. 20,5 x 24,5 cm. Fundación Almine & Bernard Ruiz-Picasso para el Arte. Carnet 17.

OPP.30:170; LO.18*:156p



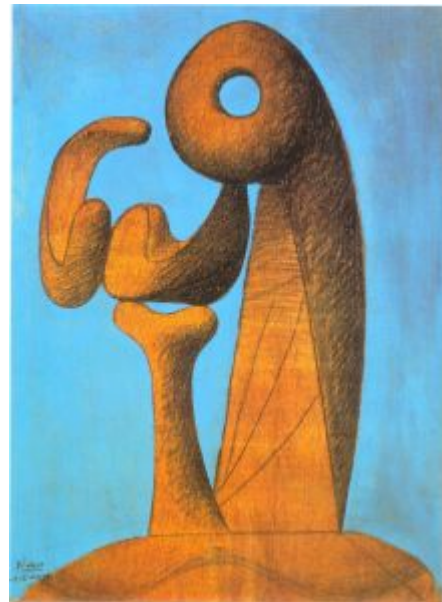
La crucifixion. Paris. 7-February/1930. Oil on plywood. 51,5 x 65,5 cm. Musée Picasso, Paris. Dation 1979.



OPP.30:001; MPP:122; P.IV:220; PP.30:018; Z.VII:287; AB.05b*:161; AB.39a*:233; AB.46:167p; AB.57*:n/a; AB.69:11b; AC.81:50p; BK.96:117p; BM.18*:6; BP.21:57p; BS.22*:57; CO.05*:n/a; DB.89:101p; DD.61:214p; EC.02:482; GA.00:25p; GB.87:208; GC.96:208-209p; GG.87:87p; GG.93:33; GP.32*:196; GP.96:182p; IS.98:10-11p; JB.08:43p; JC.01b*:77; JC.98:23p; JF.96:119p; JM.93:76-77p; JR.07:396p; KB.04:6p; KZ.32*:196; LO.18:180p; LP.99:120-121p; LU.93:51; LW.13:9; MA.08a*:n/a; MA.23c*:32; MF.06*:121; MN.80*:n/a; MP.85:108; MS.00a:pf; NC.10:36; NY.41b*:n/a; OR.90:130p; PA.07a*:160-161p; PA.17b*:186; PA.19f*:68; PA.21f*:146; PA.79a*:176; PD.09:311p; PE.01a:34p; PM.91:63p; RJ.03:86; RK.69:23; RP.60*:123; RP.81:12.7; RS.88:116-117p; RU.17:108p; SG.88:84p; SG.96:3.5; SS.76:293; TC.13:3.5; TH.75:107; UP.00:608; UW.84*:8; VR.90:28p; WR.68*:179; WR.80*:278p; WW.91:337p

Étude pour un monument. Paris. 19-February/1930. Oil & color pencil on wood panel. 65 x 48 cm. Private collection. Courtesy James Goodman Gallery, New York. Formerly Walter P. Chrysler, Jr. Collection; Mrs. Mary Callery Collection.

OPP.30:008; PP.30:019; Z.VII:420; AB.39a*:234; AB.46:165p; NY.31g*:22; NY.36b*:19; PA.19f:139p; RI.41*:184; TC.13:5.18; UW.91*:32





Le baiser. Paris. 22-February/1930. Oil & charcoal incised on wooden cabinet door. 47,2 x 64,1 cm. Sotheby's. #60, N09740, 11/14/17. Formerly Jerome L. and Ellen Stern Collection; Marina Picasso Collection. (Inv 12545).

OPP.30:044; PP.30:020; Z.VII:313; CG.12*:32; GS.85*:58; HN.95*:6; NY.01e*:n/a; NY.95a*:42 ; PA.19f*:69; TK.86*:PM-10

Figure (Tête d'arlequin). Paris. 16-March/1930. Oil & charcoal on wood panel (cupboard door) [Obverse of *Figure*]. [70,5 x 56] 71 x 56 x 3,5 cm. Musée des Beaux-Arts, Grenoble. (Inv DG 1990-6-1). On loan from Musée Picasso, Paris. Jacqueline Roque Picasso Collection. Dation 1990.

OPP.30:045; MPP:1990.16; P.IV:223; PP.30:021; Z.VII:297; DO.07*:195; EC.09*:14; GR.90*:13; LG.81:198; ND.01*:22; PA.19f*:70; TK.04*:n/a



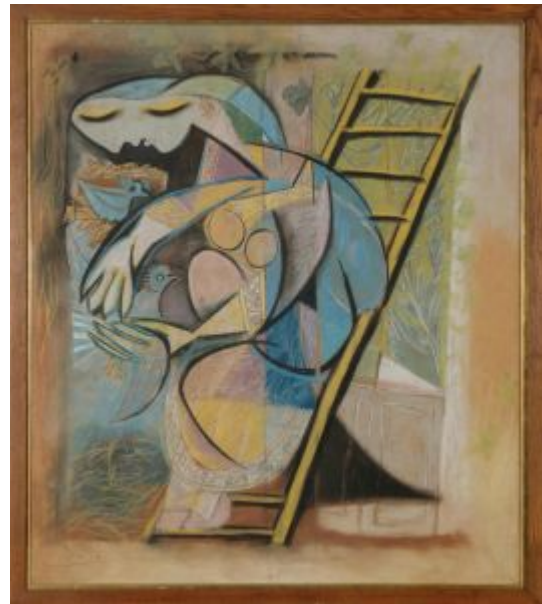


Figure. Paris. 16-March/1930. Oil & charcoal on wood panel (cupboard door) [Reverse of *Figure (Tête d'arlequin)*]. 70,5 x 56 cm. Musée des Beaux-Arts, Grenoble. On loan from Musée Picasso, Paris. Jacqueline Roque Picasso Collection. Dation 1990.

OPP.30:159

La femme aux pigeons. Paris. [26-March]/1930 [1932] [1933]. Pastel on Kraft paper mounted on canvas. 200 x 185 cm. Musée National d'Art Moderne, Centre Georges Pompidou, Paris. (Inv AM.2912D). Donation Marie Cuttoli, 1963.

OPP.30:005; PP.30:022; BS.55:223p; GC.96:219p; GG.87:82p; MJ.55*:n/a; PD.09:255p; RP.60*:266; UP.00:613; WW.91:336p



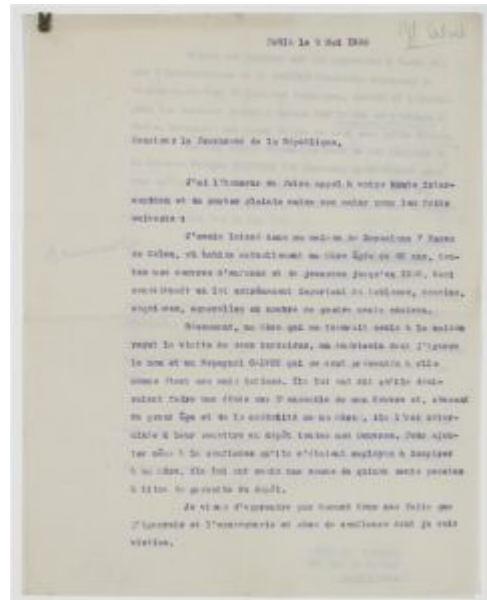


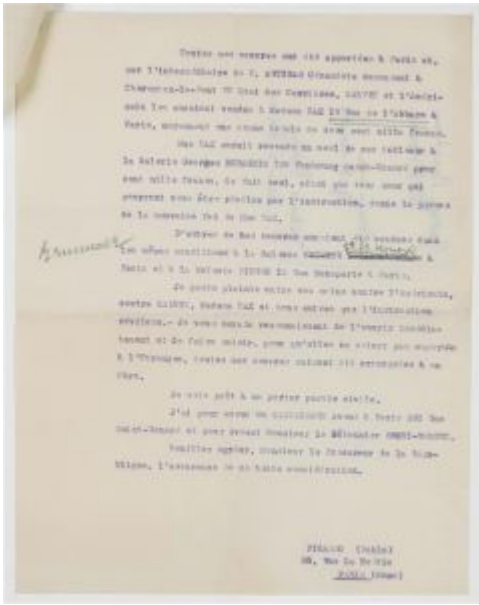
Ovide, Les Métamorphoses (Combat pour Andromède entre Persée et Phinée). Boisgeloup. [April/1930]. Etching. 31,3 x 22,3 cm. Musée Picasso, Paris. Dation 1979.

OPP.30:200; Ba:152.1; MPP:2126

Lettre de l'artiste au Procureur de la République. Paris. 9-May/1930. Ink on paper [Obverse of *Lettre de l'artiste au Procureur de la République*]. S/U. Musée Picasso, Paris.

OPP.30:157





Lettre de l'artiste au Procureur de la République. Paris. 9-May/1930. Ink on paper [Reverse of *Lettre de l'artiste au Procureur de la République*]. S/U. Musée Picasso, Paris.

OPP.30:158

Lettre autographe à Monsieur Labert Skira. Paris. 20-May/1930. Typed document. 22,9 x 27,9 cm. International Autograph Auctions Europe. #354, 250320, 2020.

OPP.30:178





Signatures. Paris. [15-June]/1930. Graphite on printed document from Galeries Georges Petit, Cent ans de peinture française. S/U. National Gallery of Art Library. Gift of Chester Dale.

OPP.30:039

Tête d'homme (Étude). Boisgeloup. July/1930. Graphite on white Vergé paper. 17 x 10,7 cm. Musée Picasso, Paris. Sketchbook 20. Jacqueline Roque Picasso Collection. Dation 1990.

OPP.30:132; MPP:1990.109.15r; P.IV:109; BL.96:39.15r; GR.90*:106; TU.15:111p





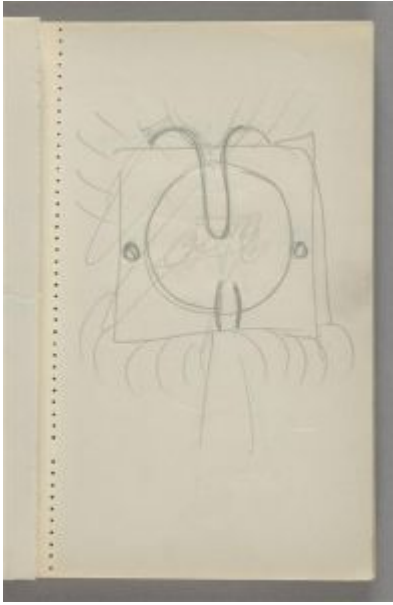
Tête d'homme (Étude). Boisgeloup. July/1930. Graphite on white Vergé paper. 17 x 10,7 cm. Musée Picasso, Paris. Sketchbook 20. Jacqueline Roque Picasso Collection. Dation 1990.

OPP.30:133; MPP:1990.109.16r; P.IV:110; BL.96:39.16r;
GR.90*:106

Tête d'homme (Étude). Boisgeloup. July/1930. Graphite on white Vergé paper. 17 x 10,7 cm. Musée Picasso, Paris. Sketchbook 20. Jacqueline Roque Picasso Collection. Dation 1990.

OPP.30:134; MPP:1990.109.20r; P.IV:111; BL.96:39.20r;
GR.90*:106



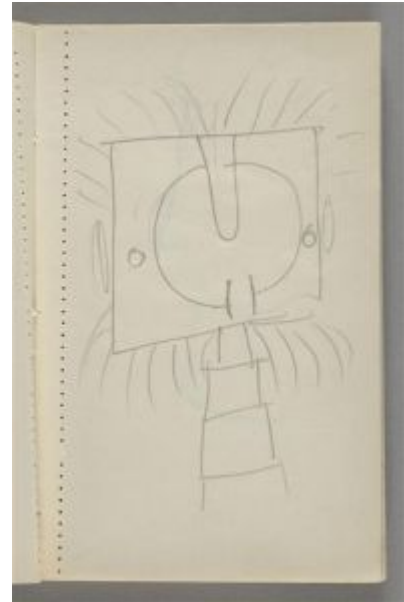


Tête d'homme (Étude). Boisgeloup. July/1930. Graphite on white Vergé paper. 17 x 10,7 cm. Musée Picasso, Paris. Sketchbook 20. Jacqueline Roque Picasso Collection. Dation 1990.

OPP.30:135; MPP:1990.109.21r; P.IV:114; BL.96:39.21r;
GR.90*:106; JR.10:96p

Tête d'homme (Étude). Boisgeloup. July/1930. Graphite on white Vergé paper. 17 x 10,7 cm. Musée Picasso, Paris. Sketchbook 20. Jacqueline Roque Picasso Collection. Dation 1990.

OPP.30:136; MPP:1990.109.22r; BL.96:39.22r; GR.90*:106



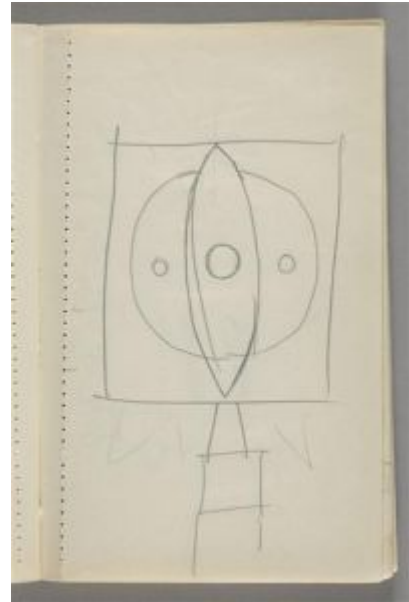


Tête d'homme (Étude). Boisgeloup. July/1930. Graphite on white Vergé paper. 17 x 10,7 cm. Musée Picasso, Paris. Sketchbook 20. Jacqueline Roque Picasso Collection. Dation 1990.

OPP.30:137; MPP:1990.109.30r; P.IV:112; PP.30:025;
BL.96:39.30r; GR.90*:106

Tête d'homme (Étude). Boisgeloup. July/1930. Graphite on white Vergé paper. 17 x 10,7 cm. Musée Picasso, Paris. Sketchbook 20. Jacqueline Roque Picasso Collection. Dation 1990.

OPP.30:138; MPP:1990.109.29r; P.IV:113; BL.96:39.29r;
GR.90*:106





1ère de couverture. Boisgeloup. July/1930. Mixed media. 17 x 10,7 cm. Musée Picasso, Paris. Sketchbook 20. Jacqueline Roque Picasso Collection. Dation 1990.

OPP.30:142; MPP:1990.109.c1; BL.96:39.c1; GR.90*:106

Tête d'homme (Étude). Boisgeloup. July/1930. Graphite on white Vergé paper. 17 x 10,7 cm. Musée Picasso, Paris. Sketchbook 20. Jacqueline Roque Picasso Collection. Dation 1990.

OPP.30:143; MPP:1990.109.25r; PP.30:024; BL.96:39.25r; GR.90*:106





Personnage sur une sellette. Boisgeloup. July/1930. Graphite on white Vergé paper. 17 x 10,7 cm. Musée Picasso, Paris. Sketchbook 20. Jacqueline Roque Picasso Collection. Dation 1990.

OPP.30:144; MPP:1990.109.32r; PP.30:026; BL.96:39.32r; GR.90*:106

Tête d'homme. Paris. [July]/1930]. Iron, brass & bronze. 83,5 x 40,5 x 36 cm. Musée Picasso, Paris. Dation 1979.

OPP.30:145; MPP:269; P.IV:115; PP.30:023; WS:80; AB.05a*:98; BA.23*:130p; BS.55:125; CG.12:24p; FF.05*:n/a; GB.87:132; JR.07:364p; MA.08a*:n/a; MA.22b*:59; MM.67:22p; MN.80*:n/a; PA.19e*:7; PA.19f*:71; PA.36b*:n/a; PA.79a*:186; RJ.03:66; TG.94*:76; TK.04*:n/a; TU.15*:39; WR.80*:283p





4ème de couverture. Boisgeloup. July/1930. Mixed media. 17 x 10,7 cm. Musée Picasso, Paris. Sketchbook 20. Jacqueline Roque Picasso Collection. Dation 1990.

OPP.30:148; MPP:1990.109.c4; BL.96:39.c4

Étude pour Tête d'homme. Boisgeloup. July/1930. Graphite on white Vergé paper. 17 x 10,7 cm. Musée Picasso, Paris. Sketchbook 20. Jacqueline Roque Picasso Collection. Dation 1990.

OPP.30:149; MPP:1990.109.27r; BL.96:39.27r





Personnage brandissant des verges. Boisgeloup. July/1930. Graphite on white Vergé paper. 17 x 10,7 cm. Musée Picasso, Paris. Sketchbook 20. Jacqueline Roque Picasso Collection. Dation 1990.

OPP.30:150; MPP:1990.109.48r; BL.96:39.48r

Nu assis, de dos (Dessin de Juli González). Boisgeloup. July/1930. Graphite on white Vergé paper. 17 x 10,7 cm. Musée Picasso, Paris. Sketchbook 20. Jacqueline Roque Picasso Collection. Dation 1990.

OPP.30:151; MPP:1990.109.02r; BL.96:39.02r





Étude de nu (Dessin de Juli González). Boisgeloup. July/1930. Graphite on white Vergé paper. 17 x 10,7 cm. Musée Picasso, Paris. Sketchbook 20. Jacqueline Roque Picasso Collection. Dation 1990.

OPP.30:152; MPP:1990.109.60v; BL.96:39.60v

Tête de femme (Dessin de Juli González). Boisgeloup. July/1930. Graphite on white Vergé paper. 17 x 10,7 cm. Musée Picasso, Paris. Sketchbook 20. Jacqueline Roque Picasso Collection. Dation 1990.

OPP.30:153; MPP:1990.109.61v; BL.96:39.61v



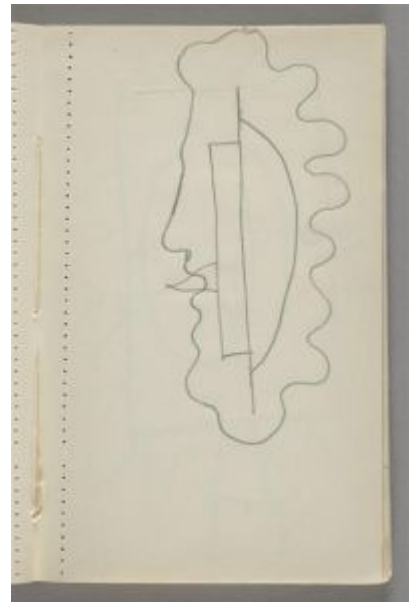


Étude pour Tête d'homme. Boisgeloup. 1930. Graphite on white Vergé paper. 17 x 10,7 cm. Musée Picasso, Paris. Jacqueline Roque Picasso Collection, Dation 1990.

OPP.30:242; MPP:1990.109.23r; BL.96:39.23r

Étude pour Tête d'homme. Boisgeloup. July/1930. Graphite on white Vergé paper. 17 x 10,7 cm. Musée Picasso, Paris. Jacqueline Roque Picasso Collection, Dation 1990.

OPP.30:243; MPP:1990.109.24r; BL.96:39.24r





Étude pour Tête d'homme. Boisgeloup. July/1930. Graphite on white Vergé paper. 17 x 10,7 cm. Musée Picasso, Paris. Jacqueline Roque Picasso Collection, Dation 1990.

OPP.30:244; MPP:1990.109.26r; BL.96:39.26r

Étude pour Tête d'homme. Boisgeloup. July/1930. Graphite on white Vergé paper. 17 x 10,7 cm. Musée Picasso, Paris. Jacqueline Roque Picasso Collection, Dation 1990.

OPP.30:245; MPP:1990.109.28r; BL.96:39.28r





Étude pour Tête d'homme. Boisgeloup. July/1930. Graphite on white Vergé paper. 17 x 10,7 cm. Musée Picasso, Paris. Jacqueline Roque Picasso Collection, Dation 1990.

OPP.30:246; MPP:1990.109.31r; BL.96:39.31r

Personnage de Tête d'homme. Boisgeloup. July/1930. Graphite on white Vergé paper. 17 x 10,7 cm. Musée Picasso, Paris. Jacqueline Roque Picasso Collection, Dation 1990.

OPP.30:247; MPP:1990.109.33r; BL.96:39.33r





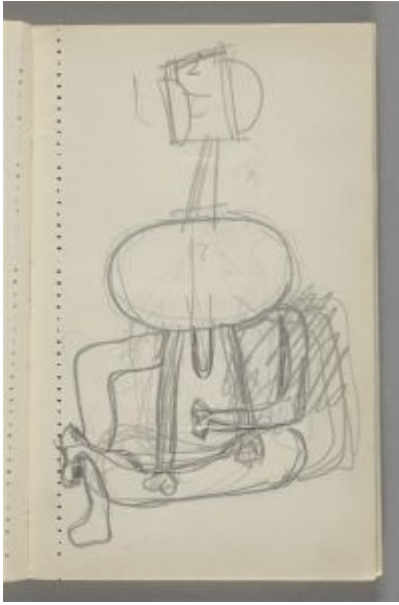
Personnage de Tête d'homme. Boisgeloup. July/1930. Graphite on white Vergé paper. 17 x 10,7 cm. Musée Picasso, Paris. Jacqueline Roque Picasso Collection, Dation 1990.

OPP.30:248; MPP:1990.109.34r; BL.96:39.34r

Personnage de Tête d'homme. Boisgeloup. July/1930. Graphite on white Vergé paper. 17 x 10,7 cm. Musée Picasso, Paris. Jacqueline Roque Picasso Collection, Dation 1990.

OPP.30:249; MPP:1990.109.35r; BL.96:39.35r





Personnage de Tête d'homme. Boisgeloup. July/1930. Graphite on white Vergé paper. 17 x 10,7 cm. Musée Picasso, Paris. Jacqueline Roque Picasso Collection, Dation 1990.

OPP.30:250; MPP:1990.109.36r; BL.96:39.36r

Personnage de Tête d'homme. Boisgeloup. July/1930. Graphite on white Vergé paper. 17 x 10,7 cm. Musée Picasso, Paris. Jacqueline Roque Picasso Collection, Dation 1990.

OPP.30:251; MPP:1990.109.37r; BL.96:39.37r





Personnage de Tête d'homme. Boisgeloup. July/1930. Graphite on white Vergé paper. 17 x 10,7 cm. Musée Picasso, Paris. Jacqueline Roque Picasso Collection, Dation 1990.

OPP.30:252; MPP:1990.109.38r; BL.96:39.38r

Personnage de Tête d'homme. Boisgeloup. July/1930. Graphite on white Vergé paper. 17 x 10,7 cm. Musée Picasso, Paris. Jacqueline Roque Picasso Collection, Dation 1990.

OPP.30:253; MPP:1990.109.39r; BL.96:39.39r



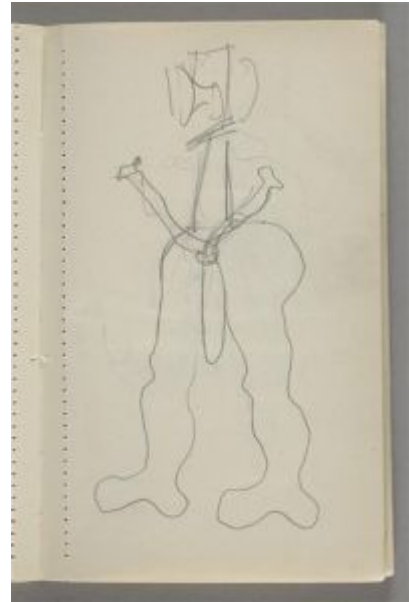


Personnage de Tête d'homme. Boisgeloup. July/1930. Graphite on white Vergé paper. 17 x 10,7 cm. Musée Picasso, Paris. Jacqueline Roque Picasso Collection, Dation 1990.

OPP.30:254; MPP:1990.109.40r; BL.96:39.40r

Personnage de Tête d'homme. Boisgeloup. July/1930. Graphite on white Vergé paper. 17 x 10,7 cm. Musée Picasso, Paris. Jacqueline Roque Picasso Collection, Dation 1990.

OPP.30:255; MPP:1990.109.41r; BL.96:39.41r





Esquisse pour Tête d'homme. Boisgeloup. July/1930. Graphite on white Vergé paper. 17 x 10,7 cm. Musée Picasso, Paris. Jacqueline Roque Picasso Collection, Dation 1990.

OPP.30:256; MPP:1990.109.41v; BL.96:39.41v

Personnage de Tête d'homme brandissant des verges. Boisgeloup. July/1930. Graphite on white Vergé paper. 17 x 10,7 cm. Musée Picasso, Paris. Jacqueline Roque Picasso Collection, Dation 1990.

OPP.30:257; MPP:1990.109.42r; BL.96:39.42r





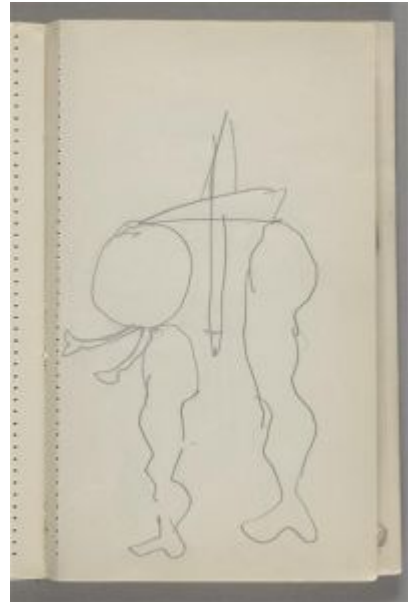
Personnage de Tête d'homme brandissant des verges.

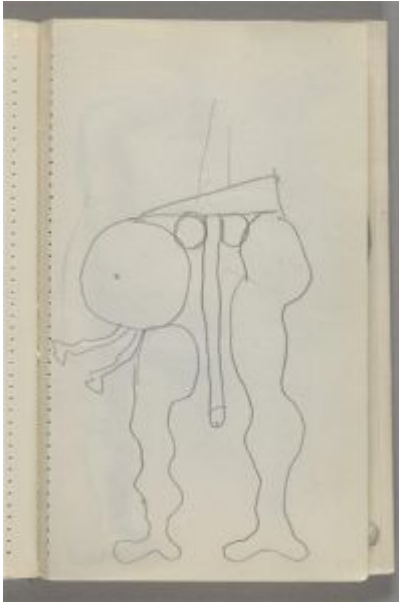
Boisgeloup. July/1930. Graphite on white Vergé paper. 17 x 10,7 cm.
Musée Picasso, Paris. Jacqueline Roque Picasso Collection, Dation
1990.

OPP.30:258; MPP:1990.109.43r; BL.96:39.43r

Esquisse du personnage de Tête d'homme. Boisgeloup.
July/1930. Graphite on white Vergé paper. 17 x 10,7 cm.
Musée Picasso, Paris. Jacqueline Roque Picasso Collection,
Dation 1990.

OPP.30:259; MPP:1990.109.44r; BL.96:39.44r



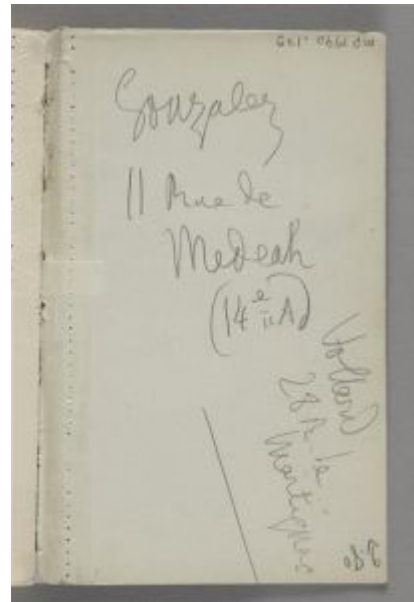


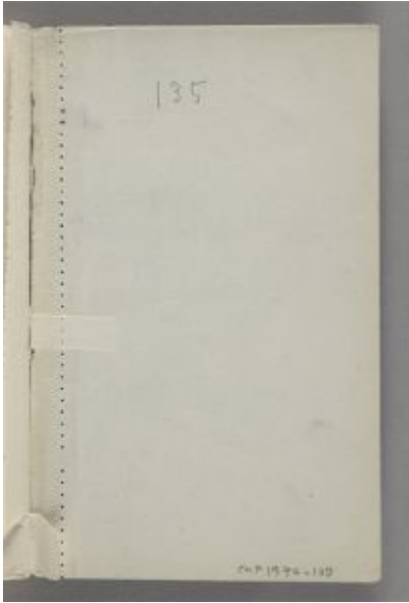
Esquisse du personnage de Tête d'homme. Boisgeloup. July/1930. Graphite on white Vergé paper. 17 x 10,7 cm. Musée Picasso, Paris. Jacqueline Roque Picasso Collection, Dation 1990.

OPP.30:260; MPP:1990.109.45r; BL.96:39.45r

2ème de couverture: inscription. Boisgeloup. July/1930. Graphite on white Vergé paper. 17 x 10,7 cm. Musée Picasso, Paris. Jacqueline Roque Picasso Collection, Dation 1990.

OPP.30:261; MPP:1990.109.c2; BL.96:39.c2





3ème de couverture. Boisgeloup. July/1930. Graphite on white Vergé paper. 17 x 10,7 cm. Musée Picasso, Paris. Jacqueline Roque Picasso Collection, Dation 1990.

OPP.30:262; MPP:1990.109.c3; BL.96:39.c3

Personnage de Tête d'homme. Boisgeloup. 20-July/1930. Graphite on white Vergé paper. 17 x 10,5 cm. Musée Picasso, Paris. Sketchbook 20. Jacqueline Roque Picasso Collection. Dation 1990.

OPP.30:040; MPP:1990.109.47r; PP.30:027; BL.96:39.47r; GG.86*:100; GR.90*:106; JC.01a*:103b; JR.07:420p; MA.22b*:57; TE.21*:184; TG.94:203p





Personnage brandissant des verges. Boisgeloup. 20-July/1930. Graphite on white Vergé paper. 17 x 10,7 cm. Musée Picasso, Paris. Sketchbook 20. Jacqueline Roque Picasso Collection. Dation 1990.

OPP.30:050; MPP:1990.109.46r; BL.96:39.46r; GR.90*:106; JC.01a*:103a

Carte postale adressée à Gertrude Stein. Boisgeloup. 25-July/1930. Ink on postcard. S/U. Beinecke Rare Book and Manuscript Library. Yale University. Gertrude Stein & Alice B. Toklas Collection.

OPP.30:181



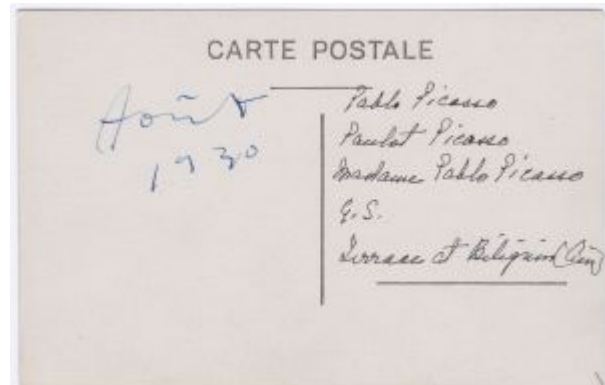


Carte postale adressée à Gertrude Stein.
[Juan-les-Pins]. August/1930. Ink on postcard.
S/U. Beinecke Rare Book and Manuscript Library,
Yale University. Gertrude Stein & Alice B. Toklas
Collection.

OPP.30:182

Carte postale adressée à Gertrude Stein. Juan-les-Pins. August/1930. Ink on postcard. S/U. Beinecke Rare Book and Manuscript Library, Yale University. Gertrude Stein & Alice B. Toklas Collection.

OPP.30:183





Baigneuse debout. Juan-les-Pins. 14-August/1930. Sand on back of canvas & stretcher, object, cardboard, plants glued & stitched to canvas. 33 x 24,5 x 2 cm. Musée Picasso, Paris. Dation 1979.

OPP.30:060; MPP:124; P.IV:232; PP.30:031; WS:118;
AB.05a:57; AN.18*:52; MP.85:261; MR.13:96p; PA.02f*:n/a;
PA.79a*:178; TE.21*:183

Visage aux deux profils. Juan-les-Pins. 14-August/1930. Sand on back of canvas & stretcher, glued & sewn cardboard. 41 x 33 x 1,5 cm. Musée Picasso, Paris. Dation 1979.

OPP.30:091; MPP:126; P.IV:231; PP.30:030;
WS:77; MP.85:260; MR.13:97p; PA.79a*:180





Baigneuse et profil. Juan-les-Pins. 14-August/1930. Sand on back of canvas & stretcher, cardboard & leaves glued & sewn on the canvas. 27 x 35 x 3 cm. Musée Picasso, Paris. Dation 1979.

OPP.30:092; MPP:125; P.IV:229; PP.30:029; WS:76; AN.18*:53; IC.05:86p; JR.07:424p; MP.85:259; MR.13:97p; PA.02f*:n/a; PA.79a*:179

Baigneuse couchée. Juan-les-Pins. 20-August/1930. Sand on back of canvas & stretcher, objects, string, glued & sewn cardboard. 24 x 35 x 2 cm. Musée Picasso, Paris. Dation 1979.

OPP.30:090; MPP:127; PP.30:032; WS:118.A; AN.18*:54; BA.23*:134p; MP.85:262; PA.02f*:n/a; PA.79a*:181





Baigneuse couchée. Juan-les-Pins. 21-August/1930. Sand on canvas, wood & plants glued & stitched. 35 x 27,5 x 3,5 cm. Musée Picasso, Paris. Dation 1979.

OPP.30:061; MPP:128; P.IV:226; PP.30:033; WS:119; AB.05a:58; BU.22:62p; MP.85:263; MR.13:96p; PA.02f*:n/a; PA.79a*:182

Composition au gant. Juan-les-Pins. 22-August/1930. Sand on back of canvas & stretcher, glove, cardboard. 27,5 x 35,5 x 8 cm. Musée Picasso, Paris. Dation 1979.

OPP.30:046; MPP:123; P.IV:228; PP.30:034; WS:75; AB.05a:56; AB.39a*:236; AB.46:164p; AB.57*:n/a; BA.23*:134p; GB.87:135; GC.96:208p; MP.85:264; MR.13:99p; PA.02f*:n/a; PA.79a*:177; PD.09:268p; RJ.03:68; SS.76:93; TH.75:111; TU.15*:43; TV.06:211p; UP.00:611; WR.80*:281p; WS.02:125p





Certificat de nationalité espagnole de l'artiste. Cannes. 23-August/1930. Ink on paper. S/U. Musée Picasso, Paris.

OPP.30:154

Certificat de nationalité espagnole de l'artiste. Cannes. 23-August/1930. Ink on paper. S/U. Musée Picasso, Paris.

OPP.30:155





Objet à la feuille de palmier. Juan-les-Pins. 27-August/1930. Sand on back of canvas & stretcher, plants, cardboard. 25 x 33 x 4,5 cm. Musée Picasso, Paris. Dation 1979.

OPP.30:047; MPP:129; P.IV:230; PP.30:035; WS:78; BA.17*:163p; GC.96:208p; LG.81:132; MP.85:265; PA.02f*:n/a; PA.79a*:183; PD.09:268p; TU.15*:42; UP.00:610

Paysage aux bateaux. Juan-les-Pins. 28-August/1930. Dyed sand on back of canvas & stretcher, leaves, cardboard & little boats glued & sewn on the canvas. 26,5 x 36 x 7 cm. Musée Picasso, Paris. Dation 1979.

OPP.30:089; MPP:130; P.IV:227; PP.30:036; WS:117; AN.18*:55; JV.06:67p; MP.85:266; PA.02f*:n/a; PA.79a*:184





Ovide, Les Métamorphoses (La mort d'Orphée (Étude)).

Juan-les-Pins. 1-September/1930. Pen & India ink on blue paper. 27 x 21 cm. Musée Picasso, Paris. Dation 1979.

OPP.30:015; MPP:1033.r; PP.30:037; AN.18:99p;
JC.01b*:21; LA.16:163p; MI.18*:n/a; PA.07a*:151p;
PA.93a*:56; UW.84:66a

Maison. [Juan-les-Pins]. [1-September]/1930. Pen & ink on paper. 21 x 27 cm. Musée Picasso, Paris. Dation 1979.

OPP.30:100; MPP:1033.v; PP.30:038



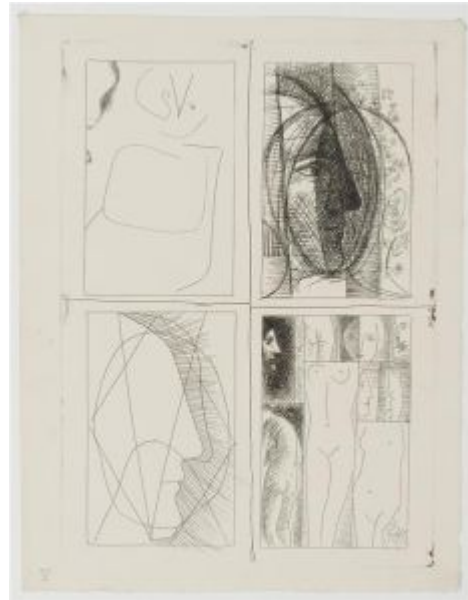


Baigneuse au parasol. Juan-les-Pins. Early-September/1930 [1932]. Led pencil on opened envelope. 23,5 x 28,3 cm. Musée Picasso, Paris. Dation 1979.

OPP.30:074; MPP:1068; PP.30:042; Z.VIII:186; JR.91:42p; LG.81:163; LO.18:108p; PD.06*:n/a

Les quatre saisons. Boisgeloup. September/1930. Etching. 13,8 x 8,8 cm. Musée Picasso, Paris. Dation 1979.

OPP.30:164; MPP:2171





Deux nus assis. Boisgeloup. September~October/1930. Etching. 31,2 x 22,2 cm. Musée Picasso, Paris. Dation 1979.

OPP.30:190; Ba:200.1; MPP:2174

Ovide, Les Métamorphoses (La mort d'Orphée).
Juan-les-Pins. 3-September/1930. Etching. 22,5 x 17,1
cm. Staatsgalerie Stuttgart.

OPP.30:016; Ba:173; AN.18*:56; GM.81*:70;
JC.01b*:22; LA.16:165p; LF.00:2.1; PA.93a*:57;
PD.09:290p; YB.08:90p





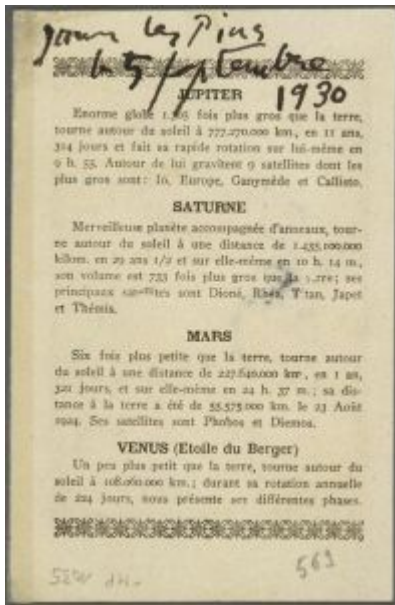
Ovide, Les Métamorphoses (La mort d'Orphée). Juan-les-Pins. 3-September/1930. Drypoint on Arches Vélin paper. 22,5 x 17,1 cm. Musée Picasso, Paris. Dation 1979.

OPP.30:167; MPP:2149

Ovide, Les Métamorphoses (La mort d'Orphée) (I). Juan-les-Pins. 3-September/1930. Drypoint. 29,7 x 27,1 cm. Musée Picasso, Paris. Dation 1979.

OPP.30:211; Ba:173.1; MPP:2148





Composition aux deux figures. Juan-les-Pins. 5-September/1930. India ink on photograph [Reverse of *Composition aux deux figures*]. 13,9 x 8,9 cm. Musée Picasso, Paris. Dation 1979.

OPP.30:058; MPP:1035.v; AN.18*:57



Cheval couché. Juan-les-Pins. 5-September/1930. Pen & India ink [Reverse of *Cheval couché*]. 8,9 x 14 cm. Musée Picasso, Paris.

OPP.30:059; MPP:1034.v; AN.18*:58



Composition aux deux figures. Juan-les-Pins. 5-September/1930. India ink on photograph of Saturn, Mars & Venus [Obverse of *Composition aux deux figures*]. 14 x 8,8 cm. Musée Picasso, Paris. Dation 1979.

OPP.30:098; MPP:1035.r; PP.30:039; AB.97b*:230; AN.18*:57

Cheval couché. Juan-les-Pins. 5-September/1930. India ink on photograph of the moon [Obverse of *Cheval couché*]. 8,8 x 14 cm. Musée Picasso, Paris.

OPP.30:099; MPP:1034.r; PP.30:040; AB.97b*:232; AN.18*:58; BF.14:76p; CP.95:62p





Profils féminins sur main découpée. Juan-les-Pins. 6-September/1930. India ink on newspaper. 15 x 17,5 cm. Musée Picasso, Paris. Dation 1979.

OPP.30:097; MPP:1036; PP.30:041; AB.05a*:n/a; AB.97b*:231; AN.18*:59; PA.21g*:135p

Ovide, Les Métamorphoses (Femme et taureau (Étude)). Boisgeloup. 10-September/1930. Pen & blue ink on squared paper. 18,2 x 13,5 cm. Musée Picasso, Paris. Dation 1979.

OPP.30:017; MPP:1037; PP.30:043; BM.18*:9; JC.01b*:23; PA.07a*:150p; PA.93a*:58; PD.06*:253p; RU.17:234p



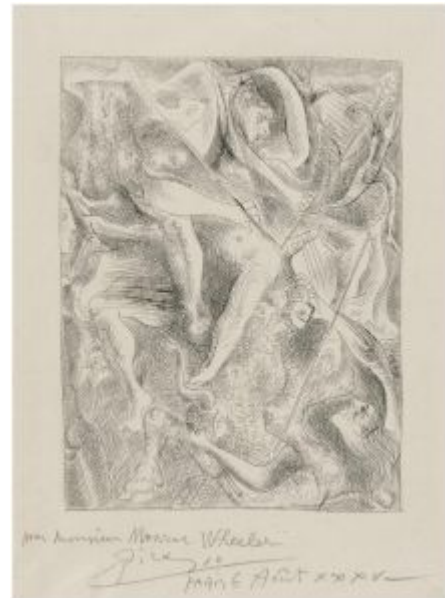


Suite Volland L001 (Femme nue avec couronne de fleurs). [Boisgeloup]. 13-September/1930. Etching on Montval. 31,5 x 22,6 cm. The National Gallery of Canada, Ottawa. Purchased 1957. Also Christie's. #211, 1074, 05/01/02.

OPP.30:014; B.I:134; Ba:192; MPP:1982.3; HB.56:1; TH.75:155; UW.88*:92; YB.08*:V.7

Ovide, Les Métamorphoses (La mort d'Orphée). Boisgeloup. 16-September/1930. Etching on copper. 31,2 x 22,1 cm. The Museum of Modern Art, NYC. (Inv 2717.1967).

OPP.30:018; B.I:1317; Ba:174; JC.01b*:24; LA.16:167p; NC.10:61; PA.93a*:59; SS.76:231





Suite Vollard L002 (Femme nue se couronnant de fleurs).
[Boisgeloup]. 16-September/1930. Etching on Montval laid paper. 31,3 x 22,2 cm. The National Gallery of Canada, Ottawa. Purchased 1957. Also Sotheby's. #282, N08123, 10/28/05.

OPP.30:023; B.I:135; Ba:195; HB.56:2; YB.08*:V.2

Femme nue couronnée de fleurs, aux jambes croisées.
[Boisgeloup]. 16-September/1930. Copper plate for *Suite Vollard L001 (Femme nue avec couronne de fleurs)*. 31,4 x 22,3 cm. Musée Picasso, Paris. Don de Roger et Madeleine Lacourrière.

OPP.30:160; MPP:1980.2





Femme nue se couronnant de fleurs. [Boisgeloup]. 16-September/1930. Copper plate for *Suite Vollard L002 (Femme nue se couronnant de fleurs)*. 44,8 x 34 cm. Musée Picasso, Paris. Don de Roger et Madeleine Lacourière.

OPP.30:161; MPP:1980.3

Femme nue couronnée de fleurs assise en tailleur. Boisgeloup. 16-September/1930. Etching. 30,9 x 22,2 cm. Musée Picasso, Paris.

OPP.30:166; B.I:130; Ba:194.1; MPP:2169





Femme nue couronnée de fleurs, tenant une couronne à la main. Boisgeloup. 16-September/1930. Etching. 31,3 x 22,2 cm. Musée Picasso, Paris. Dation 1979.

OPP.30:184; B.I:129; Ba:193; MPP:2168

Femme nue se couronnant de fleurs. Boisgeloup. 16-September/1930. Etching. 31,1 x 22,3 cm. Musée Picasso, Paris. Dation 1979.

OPP.30:188; Ba:195.1; MPP:2468





Femme nue couronnée de fleurs, aux jambes croisées.

Boisgeloup. 16-September/1930. Etching. 31,9 x 22,3 cm. Musée Picasso, Paris. Dation 1979.

OPP.30:189; Ba:192.1; MPP:2467

Femme nue couronnée de fleurs, aux jambes croisées. Boisgeloup. 16-September/1930. Etching. 31,3 x 22,3 cm. Musée Picasso, Paris. Donation Roger et Madeleine Lacourière en 1982.

OPP.30:193; Ba:192.1B; MPP:1982.60





Femme nue se couronnant de fleurs. Boisgeloup. 16-September/1930. Etching. 31,3 x 22,3 cm. Musée Picasso, Paris. Donation Roger et Madeleine Lacourière en 1982.

OPP.30:194; Ba:195.2; MPP:1982.61

Ovide, Les Métamorphoses (La mort d'Orphée) (II). Boisgeloup. 16-September/1930. Etching. 31,3 x 22,2 cm. Musée Picasso, Paris. Dation 1979.

OPP.30:212; Ba:174.1; MPP:2150





Ovide, Les Métamorphoses L016 (Méléagre tue le sanglier de Calydon). Boisgeloup. 18-September/1930. Etching on wove paper. 31,1 x 22,2 cm. Museu Picasso, Barcelona. Also Christie's. #178, 8493, 02/14/01.

OPP.30:011; B.I:114; Ba:158.B; GC:19.16; MPB:70.960; GD.11*:56; GM.81*:53; JL.14*:72; JL.71:242p; LF.00:2.17

Ovide, Les Métamorphoses L022 (La mort d'Orphée). Boisgeloup. 18-September/1930. Etching on copper. 22,5 x 17,1 cm. Sotheby's. #106, L22161, 09/08/22.

OPP.30:019; B.I:120; Ba:164.B; GC:19.22; MPB:65.445; MPB:70.966; AH.13*:55; EC.02:521; GM.81*:59; HJ.96:54p; JC.01b*:25; JL.14*:75; LA.16*:201p; LF.00:2.4; PA.93a*:60; PD.09:291p; SF.09:115p; UW.84*:66; YB.08:90p





Ovide, Les Métamorphoses L014 (Céphale tue par mégarde sa femme Procris). Boisgeloup. 18-September/1930. Etching. 31,2 x 22,4 cm. The Museum of Modern Art, NYC. (Inv 968.1964.14). The Louis E. Stern Collection. Also Museu Picasso, Barcelona.

OPP.30:034; B.I:112; Ba:156.B; GC:19.14; MPB:70.958; GM.81*:51; JL.14*:71; JL.71:242p; JR.07:429p; LF.00:2.23; UW.84*:63

Ovide, Les Métamorphoses (Térée et sa belle-sœur Philomèle). [Boisgeloup]. 18-September/1930. Etching. 22,4 x 17,2 cm. Musée Picasso, Paris. Dation 1979.

OPP.30:036; Ba:175; MPP:2151; LA.16:169p; LF.00:2.10; LO.18:154p



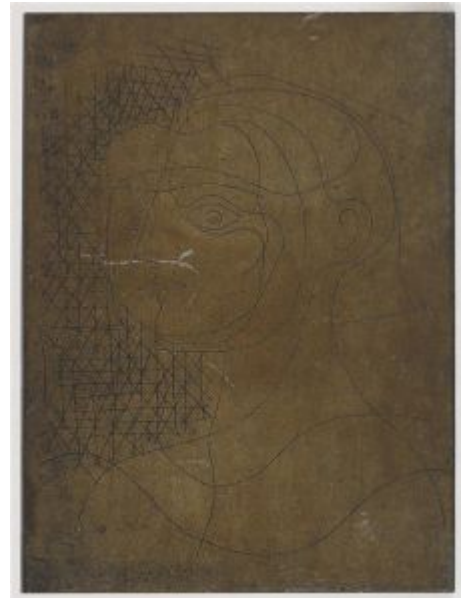


Les Ménades tuent les boeufs de labour avant d'achever Orphée. Paris. 18-September/1930. Copper plate. 31,6 x 22,5 cm. Musée Picasso, Paris. Dation 1979.

OPP.30:163; MPP:3522

Térée et sa belle-sœur Philomèle. Boisgeloup. 18-September/1930. Etching. 31,5 x 22,6 cm. Musée Picasso, Paris. Don des héritiers Picasso en 1982.

OPP.30:185; MPP:1982.40





Ovide, Les Métamorphoses (Céphale tue par mégarde sa femme Procris). Boisgeloup. 18-September/1930. Etching. 31,2 x 22,3 cm. Musée Picasso, Paris. Dation 1979.

OPP.30:202; Ba:156.1; MPP:2131

Ovide, Les Métamorphoses (Méléagre tue le sanglier de Calydon). Boisgeloup. 18-September/1930. Etching. 31,1 x 22,3 cm. Musée Picasso, Paris. Dation 1979.

OPP.30:203; Ba:158.1; MPP:2133





Ovide, Les Métamorphoses (La mort d'Orphée).
Boisgeloup. 18-September/1930. Etching. 31,2 x 22,4 cm.
Musée Picasso, Paris. Dation 1979.

OPP.30:206; Ba:164.1; MPP:2139

Ovide, Les Métamorphoses (Méléagre tue le sanglier de Calydon). Boisgeloup. 18-September/1930. Etching. 31,1 x 22,2 cm. The Art Institute of Chicago. (Inv 1946.65.16). Given in memory of A. Peter Dewey. Also Christie's. #136, 21395, 05/02-12/22.

OPP.30:220; Ba:158





Ovide, Les Métamorphoses (La mort d'Orphée).

Boisgeloup. 18-September/1930. Etching. 22,5 x 17,1 cm. The Art Institute of Chicago. (Inv 1946.65.22). Also Given in memory of A. Peter Dewey. Christie's. #298, 17163, 04/17-18/19.

OPP.30:226; Ba:164

Ovide, Les Métamorphoses (Céphale tue par mégarde sa femme Procris). Boisgeloup. 18-September/1930. Etching. 31,2 x 22,4 cm. The Art Institute of Chicago. (Inv 1946.65.14). Given in memory of A. Peter Dewey.

OPP.30:229; Ba:156





Ovide, Les Métamorphoses L008 (Les filles de Minyas refusent de reconnaître le dieu Bacchus). Boisgeloup. 20-September/1930. Etching on Rives paper, edition 100. 33 x 25,5 cm. Museu Picasso, Barcelona. Also Sotheby's. #255, L01171, 07/06/01.

OPP.30:013; B.I:106; Ba:150.B; GC:19.08; MPB:70:952; CG.12:71p; CK.04*:83; GM.81*:45; JL.14*:68; JR.07:429p; LF.00:2.9; UW.88*:94

Ovide, Les Métamorphoses L018 (Hercule tue le Centaure Nessus). Boisgeloup. 20-September/1930. Etching. 22,5 x 17,1 cm. The Museum of Modern Art, NYC. (Inv 968.1964.18). The Louis E. Stern Collection; Museu Picasso, Barcelona.

OPP.30:029; B.I:116; Ba:160.B; GC:19.18; MPB:70.962; GD.11*:58; GM.81*:55; JL.14*:73; LA.16*:202p; LF.00:2.18; LF.00:2.19; LO.90c:273p; SF.09*:13; UW.84*:64; YB.08:91p





Ovide, Les Métamorphoses L004 (Chute de Phaéon avec le char de Soleil). Boisgeloup. 20-September/1930. Etching. 22,3 x 17 cm. Museu Picasso, Barcelona. Also Christie's. #0300, 1830, 05/01/07.

OPP.30:032; B.I:102; Ba:146.B; GC:19.04; MPB:70:948; BS.55:198p; CK.04*:82; FC.00*:53; GM.81*:41; JL.14*:66; LF.00:2.24; UW.84*:61

Ovide, Les Métamorphoses L002 (Deucalion et Pyrrha créent un nouveau genre humain). Boisgeloup. 20-September/1930. Etching on Arches laid, edition 30. 32,5 x 25,5 cm. Museu Picasso, Barcelona. Also Christie's. #205, 8964, 12/01/00.

OPP.30:033; B.I:100; Ba:144.B; GC:19.02; MPB:70.946; GD.11*:57; GM.81*:39; JL.14*:65; LF.00:2.30; RU.17:49p; UW.88*:93





Ovide, Les Métamorphoses (Acton se métamorphose en un cerf). [Boisgeloup]. 20-September/1930. Etching. 22,5 x 17 cm. Musée Picasso, Paris. Dation 1979.

OPP.30:037; Ba:177; MPP:2153; LF.00:2.20

Ovide, Les Métamorphoses (Eurydice piquée par un serpent). Paris. 20-September/1930. Etching on Arches Vélin paper. 22,5 x 17,1 cm. Musée Picasso, Paris. Dation 1979.

OPP.30:048; B.I:1318; Ba:176.1; MPP:2152





Ovide, Les Métamorphoses (Deucalion et Pyrrha créent un nouveau genre humain). Boisgeloup. 20-September/1930. Etching. 31,2 x 22,3 cm. Musée Picasso, Paris. Dation 1979.

OPP.30:196; Ba:144.1; MPP:2118

Ovide, Les Métamorphoses (Chute de Phaeton avec le char du soleil). Boisgeloup. 20-September/1930. Etching. 31,1 x 22,3 cm. Musée Picasso, Paris. Dation 1979.

OPP.30:197; Ba:146.1; MPP:2120





Ovide, Les Métamorphoses (Les filles de Minyas refusent de reconnaître le dieu Bacchus). Boisgeloup. 20-September/1930. Etching. 31,2 x 22,3 cm. Musée Picasso, Paris. Dation 1979.

OPP.30:199; Ba:150.1; MPP:2124

Ovide, Les Métamorphoses (Hercule tue le centaure Nessus). Boisgeloup. 20-September/1930. Etching. 31,1 x 22,3 cm. Musée Picasso, Paris. Dation 1979.

OPP.30:204; Ba:160.1; MPP:2135





Ovide, Les Métamorphoses (Chute de Phaëton avec le char de Soleil). Boisgeloup. 20-September/1930. Etching. 31 x 22,2 cm. The Art Institute of Chicago. (Inv 1946.65.4). Given in memory of A. Peter Dewey. Also Christie's. #136, 21395, 05/02-12/22.

OPP.30:218; Ba:146

Ovide, Les Métamorphoses (Les filles de Minyas refusent de reconnaître le dieu Bacchus).

Boisgeloup. 20-September/1930. Etching. 33 x 25,5 cm. The Art Institute of Chicago. (Inv 1946.65.8). Given in memory of A. Peter Dewey. Also Sotheby's. #106, L22161, 09/08/22.

OPP.30:223; Ba:150





Ovide, Les Métamorphoses (Hercule tue le Centaure Nessus). Boisgeloup. 20-September/1930. Etching. 22,5 x 17,1 cm. The Art Institute of Chicago. (Inv 1946.65.18). Given in memory of A. Peter Dewey. Also Yale University Art Gallery. (Inv 1983.60). Katharine Ordway Fund.

OPP.30:230; Ba:160

Ovide, Les Métamorphoses (Deucalion et Pyrrha créent un nouveau genre humain). Boisgeloup. 20-September/1930. Etching. 27,8 x 17 cm. The Art Institute of Chicago. (Inv 1946.65.2). Given in memory of A. Peter Dewey.

OPP.30:231; Ba:144





Ovide, Les Métamorphoses L010 (Combat pour Andromède entre Persée et Phinée). Boisgeloup. 21-September/1930. Etching. 31,2 x 22,4 cm. Kunstmuseum Basel. (Inv 1939.203.1). Kupferstichkabinett. Gift of Dr. Georg Schmidt, Binningen/Basel. Also Beinecke Rare Book and Manuscript Library. Yale University. Gift of John Hay Whitney; Museu Picasso, Barcelona.

OPP.30:031; B.I:108; Ba:152.B; GC:19.10; MPB:70:954; AB.39a*:226; AH.13*:56; GD.11*:59; GM.81*:69; JL.14*:69; LF.00:2.29; SF.09:115p; UW.84*:62

Ovide, Les Métamorphoses L024 (Récits de Nestor sur la guerre de Troie). Boisgeloup. 21-September/1930. Etching, edition 1800. 31,3 x 22,3 cm. Kunstmuseum Basel. (Inv 1939.203.2). Kupferstichkabinett. Gift of Dr. Georg Schmidt, Binningen/Basel. Also Museu Picasso, Barcelona.

OPP.30:038; B.I:122; Ba:166.Bb; GC:19.24; MPB:70.968; AH.13*:57; GM.81*:61; JL.14*:76; LF.00:2.7; UW.88*:95





Ovide, Les Métamorphoses (Récits de Nestor sur la guerre de Troie). Boisgeloup. 21-September/1930. Etching. 31,1 x 22,3 cm. Musée Picasso, Paris. Dation 1979.

OPP.30:207; Ba:166.1; MPP:2141

Ovide, Les Métamorphoses (Récits de Nestor sur la guerre de Troie). Boisgeloup. 21-September/1930. Etching. 31,3 x 22,3 cm. The Art Institute of Chicago. (Inv 1946.65.24). Given in memory of A. Peter Dewey. Also Christie's. #136, 21395, 05/02-12/22.

OPP.30:221; Ba:166





Ovide, Les Métamorphoses (Combat pour Andromède entre Persée et Phinée). Boisgeloup. 21-September/1930. Etching. 32,8 x 22,3 mm. The Art Institute of Chicago. (Inv 1946.65.10). Given in memory of A. Peter Dewey. Also Christie's. #230, 5562, 05/25/09.

OPP.30:227; Ba:152

Femme assise. Boisgeloup. [Fall]/1930. Sculpted fir. 15,9 x 3 x 2,9 cm. Musée Picasso, Paris. Dation 1979.

OPP.30:077; MPP:282; PP.30:067; WS:100.I; MA.08a*:n/a; MI.01*:76; MP.85:324; PA.21e*:373; PA.79a*:203; RU.17*:55





Femme assise. Boisgeloup. [Fall]/1930. Sculpted fir. 17,2 x 4,5 x 3,5 cm. Musée Picasso, Paris. Dation 1979.

OPP.30:078; MPP:281; PP.30:065; WS:99.I; JF.96:105p;
MP.85:323; MR.16*:n/a; PA.21e*:372; PA.79a*:202

Femme assise. Boisgeloup. [Fall]/1930 [1931].
Sculpted fir. 17,8 x 2,1 x 2,5 cm. Musée Picasso, Paris.
Dation 1979.

OPP.30:079; MPP:280; P.IV:233; PP.30:063; WS:92.I;
JF.96:105p; MA.08a*:n/a; MI.01*:77; MP.85:322;
PA.21e*:371; PA.79a*:201; RP.11:83p





Femme debout. Boisgeloup. [Fall]/1930. Sculpted fir. 49 x 5,5 x 2,8 cm. Musée Picasso, Paris. Dation 1979.

OPP.30:080; MPP:279; PP.30:061; WS:97.I; GB.87:137; JF.96:104p; LE.21*:240; MA.08a*:n/a; MI.18*:n/a; MP.85:321; PA.79a*:200; RP.11:83p; RU.17*:62; TE.21*:88; TU.15*:48; WR.80*:284p

Femme debout. Boisgeloup. [Fall]/1930. Sculpted fir & iron wire. 47,5 x 5 x 7,5 cm. Musée Picasso, Paris. Dation 1979.

OPP.30:081; MPP:278; PP.30:059; WS:95.I; GB.87:137; JF.96:105p; MI.01*:78; MP.85:320; PA.19e*:31; PA.21e*:370; PA.79a*:199; RP.11:83p; RU.17*:62; TE.21*:87; TU.15*:47





Femme debout. Boisgeloup. [Fall]/1930. Sculpted fir. 49,5 x 2,3 x 2,3 cm. Musée Picasso, Paris. Dation 1979.

OPP.30:082; MPP:277; P.IV:239; PP.30:057; WS:94.I; MA.08a*:n/a; MP.85:319; PA.79a*:198; RP.11:83p; RU.17*:53; TE.21*:89; TU.15*:45; WR.80*:284p

Femme debout. Boisgeloup. [Fall]/1930. Sculpted fir. 19,5 x 4,5 x 2,3 cm. Musée Picasso, Paris. Dation 1979.

OPP.30:083; MPP:276; PP.30:055; WS:91.I; MA.08a*:n/a; MP.85:318; PA.19e*:32; PA.79a*:197; TE.21*:85; TH.75:141; YB.99*:42





Femme debout. Boisgeloup. [Fall]/1930. Sculpted fir. 48 x 3 x 5 cm. Musée Picasso, Paris. Dation 1979.

OPP.30:084; MPP:275; PP.30:053; WS:90.I; EC.02:484;
JR.07:422p; MA.08a*:n/a; MP.85:317; PA.21e*:365;
PA.79a*:196; RP.11:124p; RP.81:13.7; RU.17*:54; TE.21*:86;
TH.75:143; TU.15*:46

Femme debout. Boisgeloup. [Fall]/1930. Sculpted fir.
31,5 x 2,3 x 3,5 cm. Musée Picasso, Paris. Dation 1979.

OPP.30:085; MPP:274; PP.30:051; WS:89.I;
MP.85:316; PA.21e*:364; PA.79a*:195; RU.17*:63;
TH.75:142





Femme debout. Boisgeloup. [Fall]/1930. Sculpted fir. 51 x 2,3 x 4,4 cm. Musée Picasso, Paris. Dation 1979.

OPP.30:086; MPP:273; PP.30:049; WS:88.I; BA.04c*:n/a; BA.17*:128p; JR.07:422p; MA.08a*:n/a; MP.85:315; PA.21e*:366; PA.79a*:194; RU.17*:61

Femme assise. Boisgeloup. [Fall]/1930. Sculpted fir. 55,7 x 2,5 x 6 cm. Musée Picasso, Paris. Dation 1979.

OPP.30:087; MPP:272; PP.30:047; WS:86.I; GB.87:137; JR.07:422p; MA.08a*:n/a; MI.01*:79; MP.85:314; MS.00a:44p; PA.21e*:367; PA.79a*:193; RP.81:13.7; RU.17*:60; TU.15*:44; WR.80*:284p





Femme assise. Boisseloup. Fall/1930. Bronze [Cast after *Femme assise*]. 16,8 x 3 x 5 cm. Fundación Almine & Bernard Ruiz-Picasso para el Arte.

OPP.30:174; PP.30:069; WS:98.II; RU.17*:59

Couple. Boisseloup. [Fall]/1930. Sculpted limewood. 10,5 x 3,5 x 2,2 cm. Musée Picasso, Paris. Dation 1979.

OPP.30:075; MPP:285; P.IV:237; PP.30:086; WS:103.I; JC.01a*:101; MP.85:326; PA.21:212p; PA.79a*:206; RU.17*:65; TE.21*:174





Buste de femme. Boisgeloup. Fall~Winter/1930 [1931].
Sculpted pine wood. 13 x 5 x 2,5 cm. Musée Picasso, Paris.
Dation 1979.

OPP.30:076; MPP:284; PP.30:084; WS:102.I; GB.87:133;
MP.85:325; PA.21e*:374; PA.79a*:205; RU.17*:64

**Ovide, Les Métamorphoses L028 (Vertumne
poursuit Pomone de son amour).** Boisgeloup. 23-
September/1930. Etching, edition 145. 22,5 x 17,1 cm.
Kunstmuseum Basel. (Inv 1939.203.3).
Kupferstichkabinett. Gift of Dr. Georg Schmidt,
Binningen/Basel. Also Museu Picasso, Barcelona.

OPP.30:020; B.I:126; Ba:170.Bb; GC:19.28;
MPB:70.972; AH.13*:58; BS.55:37p; GM.81*:65;
JL.14*:78; LA.16*:200p; LF.00:2.33; MS.04*:n/a;
YB.08:91p





Ovide, Les Métamorphoses L026 (Polyxène, fille de Priam, est égorgée sur la tombe d'Achille). Boisgeloup. 23-September/1930. Etching. 22,4 x 17,2 cm. Musée Picasso, Paris. Also The Museum of Modern Art, NYC. (Inv 968.1964.26); Museu Picasso, Barcelona.

OPP.30:035; B.I:124; Ba:168.B; GC:19.26; MPB:70.970; MPP:3553/26; GD.11*:60; GM.81*:63; JL.14*:77; LF.00:2.15; PD.06*:185p; RJ.03:101; UW.84*:67

Ovide, Les Métamorphoses (Polyxène, Fille de Priam est égorgée sur la tombe d'Achille). Boisgeloup. 23-September/1930. Etching. 31,1 x 22,3 cm. Musée Picasso, Paris. Dation 1979.

OPP.30:208; Ba:168.1; MPP:2143





Ovide, Les Métamorphoses (Vertumne poursuit Pomone de son amour). Boisgeloup. 23-September/1930. Etching. 31,1 x 22,3 cm. Musée Picasso, Paris. Dation 1979.

OPP.30:209; Ba:170.1; MPP:2145

Ovide, Les Métamorphoses (Vertumne poursuit Pomone de son amour). Boisgeloup. 23-September/1930. Etching. 22,5 x 17,1 cm. The Art Institute of Chicago. (Inv 1946.65.28). Given in memory of A. Peter Dewey. Also Christie's. #136, 21395, 05/02-12/22.

OPP.30:222; Ba:170





Ovide, Les Métamorphoses (Polyxène, fille de Priam, est égorgée sur la tombe d'Achille). Boisgeloup. 23-September/1930. Etching. 28 × 17,4 cm. The Art Institute of Chicago. (Inv 1946.65.26). Given in memory of A. Peter Dewey.

OPP.30:228; Ba:168

Femme voilée. Boisgeloup. 24-September/1930. Etching. 31 x 22,3 cm. Musée Picasso, Paris. Dation 1979.

OPP.30:192; Ba:196; MPP:2170





Ovide, Les Métamorphoses (Numa suivant les cours de Pythagore). [Juan-les-Pins]. [25-September]/1930. Pencil on paper. 33 x 25,4 cm. Christie's. #111, 5443, 05/23/06. Formerly Christie's. #126, 9640, 05/10/01; Christie's. #481, 9520, 11/09/00.

OPP.30:010

Ovide, Les Métamorphoses L030 (Numa suit les cours de Pythagore). Boisgeloup. 25-September/1930. Etching. 22,6 x 17,4 cm. The Museum of Modern Art, NYC. (Inv 968.1964.30). The Louis E. Stern Collection. Also Museu Picasso, Barcelona.

OPP.30:025; B.I:128; Ba:172.B; GC:19.30; MPB:70.974; CK.04*:85; GM.81*:67; JL.14*:79; LF.00:2.8; UW.88*:96





Ovide, Les Métamorphoses (Milon vieilli ou Philémon et Baucis). Boisgeloup. 25-September/1930. Etching. 22,5 x 16,8 cm. Musée Picasso, Paris. Dation 1979.

OPP.30:053; MPP:2154

Ovide, Les Métamorphoses (Numa suit les cours de Pythagore). Boisgeloup. 25-September/1930. Etching. 31,1 x 22,3 cm. Musée Picasso, Paris. Dation 1979.

OPP.30:210; Ba:172.1; MPP:2147





Ovide, Les Métamorphoses (Numa suit les cours de Pythagore). Boisseloup. 25-September/1930. Etching. 22,6 x 17,4 cm. The Art Institute of Chicago. (Inv 1946.65.30). Given in memory of A. Peter Dewey. Also Sotheby's. #106, L22161, 09/08/22.

OPP.30:225; Ba:172; VR.90*:98

Deux nus assis. [Boisseloup]. [End-September]/1930. Etching, edition 100. 25,7 x 18,4 cm. Sotheby's. #259, N07888, 05/02/03.

OPP.30:022; B.I:133; Ba:200





Deux ex-libris. Boisgeloup. 27-September/1930. Etching. 14 x 19,5 cm. Musée Picasso, Paris. Dation 1979.

OPP.30:165; B.I:131; Ba:198; MPP:2172

Femme voilée. Paris. 27-September/1930. Engraving. 31 x 22,4 cm. Museum Ludwig, Köln. (Inv ML/G 2001/106). Schenkung 2001.

OPP.30:176



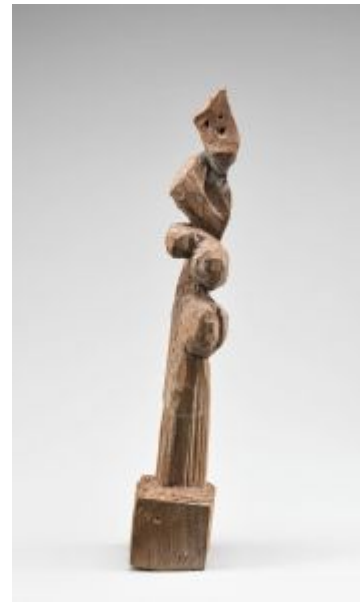


Femme voilée. Paris. 27-September/1930. Copper plate for *Femme voilée*. 31 x 22,4 cm. Museum Ludwig, Köln. (Inv ML/G 2001/105). Schenkung 2001.

OPP.30:177

Femme debout. Boisgeloup. [27~29-September]/1930. Sculpted fir. 20,3 x 3,4 x 4 cm. Musée Picasso, Paris. Dation 1979.

OPP.30:088; MPP:283; PP.30:045; WS:101.I; MP.85:313;
PA.79a*:204; RU.17*:52; TE.21*:84





Deux femmes nues. [Boisgeloup]. 30-September/1930. Etching on wove, edition 125. 31,5 x 22,6 cm. Nationalgalerie, Kupferstichkabinett, Staatliche Museen zu Berlin. Also Christie's. #254, 6960, 11/30/04.

OPP.30:041; B.I:132; Ba:199; MD.02*:176p

Deux femmes nues II. Boisgeloup. 30-September/1930. Etching. 31,3 x 22,5 cm. Musée Picasso, Paris. Dation 1979.

OPP.30:191; Ba:199.1; MPP:2173





Au bain. Boisgeloup. 1-October/1930. Etching. 31,3 x 22,2 cm. Musée Picasso, Paris. Dation 1979.

OPP.30:186; Ba:201; MPP:2472

Au bain. Boisgeloup. 1-October/1930. Etching. 31,2 x 22 cm. Musée Picasso, Paris. Donation Roger et Madeleine Lacourière en 1982.

OPP.30:195; Ba:201.3; MPP:1982.62





Au bain. Paris. 1-October/1930. Copper plate for *Suite Vollard L003 (La baigneuse)*. 31,3 x 22,3 cm. Musée Picasso, Paris. Don en 1980.

OPP.30:162; MPP:1980.4

Au bain. Boisgeloup. 1-October/1930. Etching. 31,3 x 22,2 cm. Musée Picasso, Paris. Dation 1979.

OPP.30:187; Ba:201.1; MPP:2471





Ovide, Les Métamorphoses L020 (Eurydice piquée par un serpent). Boisgeloup. 11-October/1930. Etching. 31,2 x 22,4 cm. Museu Picasso, Barcelona.

OPP.30:030; B.I:118; Ba:162.Bb; GC:19.20; MPB:70.964; MPP:3553/20; GD.11*:61; GM.81*:57; GP.96:164p; JL.14*:74; LA.16:168p; LF.00:2.27; PD.06*:184p; UW.84*:65; YB.99*:44

Femme assise. Boisgeloup. 11-October/1930. Fir wood. 17,5 x 4,7 x 2,6 cm. Private collection.

OPP.30:129; WS:98.I; RP.11*:130p





Ovide, Les Métamorphoses (Eurydice piquée par un serpent) (II). Boisgeloup. 11-October/1930. Etching. 31,1 x 22,4 cm. Musée Picasso, Paris. Dation 1979.

OPP.30:205; Ba:162.2; MPP:2137

Ovide, Les Métamorphoses (Eurydice piquée par un serpent). Boisgeloup. 11-October/1930. Etching. 31,2 x 22,4 cm. The Art Institute of Chicago. (Inv 1946.65.20). Given in memory of A. Peter Dewey. Also Christie's. #136, 21395, 05/02-12/22.

OPP.30:219; Ba:162; VR.90*:97





Suite Vollard L003 (La baigneuse). [Boisgeloup]. 17-October/1930. Etching on Montval paper, edition 300. 31,1 x 22,2 cm. Kunstmuseum Basel. (Inv 1967.1). Kupferstichkabinett, purchased 1967. Also Yale University Art Gallery. (Inv 1958.52.89). The Ernest C. Steefel Collection of Graphic Art. Gift of Ernest C. Steefel.

OPP.30:024; B.I:136; Ba:201.IBd; AH.13*:85; GM.81*:72; HB.56:3; LO.07b*:n/a; SF.09:125p; YB.08*:V.6

Ovide, Les Métamorphoses (Lutte entre Térée et sa belle-sœur Philomèle). [Boisgeloup]. 18-October/1930. Etching. [31,3 x 22,4] 31 x 22,3 cm. Private collection.

OPP.30:026; JC.01a*:104; LA.16:169p; LF.00:2.11





Ovide, Les Métamorphoses (Lutte entre Térée et sa belle-sœur Philomèle). [Boisgeloup]. 18-October/1930. Etching in bistre on wove paper. 22,3 x 17,2 cm. Christie's. #126, 7712, 04/08/09.

OPP.30:027; Ba:180; JC.01a*:105; LA.16:169p; LF.00:2.12; PA.07a*:167p

Ovide, Les Métamorphoses L012 (Lutte entre Térée et sa belle-sœur Philomèle). [Boisgeloup]. 18-October/1930. Etching. 31,3 x 22,4 cm. The Museum of Modern Art, NYC. (Inv 968.1964.12). The Louis E. Stern Collection..

OPP.30:028; B.I:110; Ba:154.B; GC:19.12; MPB:70.956; GM.81*:49; JL.14*:70; LA.16*:200p; LF.00:2.13; SF.09:115p; YB.99*:43





Ovide, Les Métamorphoses (Mort d'Orphée). Boisgeloup. 18-October/1930. Etching. 30,9 x 22,3 cm. Musée Picasso, Paris. Dation 1979.

OPP.30:054; MPP:2157

Ovide, Les Métamorphoses (Lutte entre Térée et sa belle-sœur Philomèle). [Boisgeloup]. 18-October/1930. Etching. 31,3 x 22,4 cm. The Art Institute of Chicago. (Inv 1946.65.12). Given in memory of A. Peter Dewey. Also Christie's. #18, 5981, 10/29/09.

OPP.30:168; Ba:154





Ovide, Les Métamorphoses (Lutte entre Térée et sa belle-sœur Philomèle). [Boisgeloup]. 18-October/1930. Etching. 31,3 x 22,4 cm. Musée Picasso, Paris. Dation 1979.

OPP.30:173; Ba:154.I; MPP:2128

Ovide, Les Métamorphoses (Lutte entre Térée et sa belle-soeur Philomèle) (III). Boisgeloup. 18-October/1930. Etching. 31,2 x 22,4 cm. Musée Picasso, Paris. Dation 1979.

OPP.30:201; Ba:154.1B; MPP:2129





Ovide, Les Métamorphoses (Lutte entre Térée et sa belle-sœur Philomèle) (I). Boisgeloup. 18-October/1930. Etching. 31,1 x 22,3 cm. Musée Picasso, Paris. Dation 1979.

OPP.30:213; Ba:179.1; MPP:2155

Ovide, Les Métamorphoses (Lutte entre Térée et sa belle-sœur Philomèle) (II). Boisgeloup. 18-October/1930. Etching. 30,9 x 22,2 cm. Musée Picasso, Paris. Dation 1979.

OPP.30:214; Ba:180.1; MPP:2156





Ovide, Les Métamorphoses L006 (Amours de Jupiter et de Sémélé). Boisgeloup. 25-October/1930 [1931]. Etching, edition 25. 33,5 x 26,5 cm. Museu Picasso, Barcelona. Also Sotheby's. #257, N07888, 05/02/03; Beinecke Rare Book and Manuscript Library. Yale University. Gift of John Hay Whitney; Fundación Museo del Grabado Español Contemporáneo, Marbella.

OPP.30:021; B.I:104; Ba:148.B; GC:19.06; MPB:70:950; BA.81a*:n/a; BL.98*:n/a; BS.55:35p; CR.95*:n/a; FC.00*:52; GM.81*:43; GM.81*:47; HN.00*:66; JC.01a:141p; JL.14*:67; MG.00b*:n/a; MG.97a*:n/a; MS.04*:n/a; RJ.03:100; SF.09:115p; WF.86:503

Ovide, Les Métamorphoses (Amours de Jupiter et de Sémélé). Boisgeloup. 25-October/1930. Etching. 31,3 x 22,3 cm. Musée Picasso, Paris. Dation 1979.

OPP.30:056; Ba:183; MPP:2159





Ovide, Les Métamorphoses (Amours de Jupiter et de Sémélé). Boisgeloup. 25-October/1930. Etching. 31,3 x 22,3 cm. Musée Picasso, Paris. Dation 1979.

OPP.30:057; Ba:185; MPP:2161

Ovide, Les Métamorphoses (Amours de Jupiter et de Sémélé) (I). Boisgeloup. 25-October/1930. Etching. 31,4 x 22,3 cm. Musée Picasso, Paris. Dation 1979.

OPP.30:068; B.I:1320; Ba:182.1; MPP:2158





Ovide, Les Métamorphoses (Amours de Jupiter et de Sémélé).
Boisgeloup. 25-October/1930. Etching. 31,3 x 22,3 cm. Musée
Picasso, Paris. Dation 1979.

OPP.30:126; Ba:184; MPP:2160; GM.81*:68; JC.01a*:106;
RU.17:90p

Ovide, Les Métamorphoses (Amours de Jupiter et de Sémélé).
Boisgeloup. 25-October/1930. Etching. 31,3 x
22,2 cm. Musée Picasso, Paris. Dation 1979.

OPP.30:127; Ba:186; MPP:2162; JC.01a*:107





Ovide, Les Métamorphoses (Amours de Jupiter et de Sémélé) (III). Boisgeloup. 25-October/1930. Etching. 33 x 22,3 cm. Musée Picasso, Paris. Dation 1979.

OPP.30:198; Ba:148.1; MPP:2122

Ovide, Les Métamorphoses (Amours de Júpiter et de Sémélé). Boisgeloup. 25-October/1930. Etching. 33,5 x 26,5 cm. The Art Institute of Chicago. (Inv 1946.65.6). Given in memory of A. Peter Dewey. Also Sotheby's. #106, L22161, 09/08/22.

OPP.30:224; Ba:148; VR.90*:102





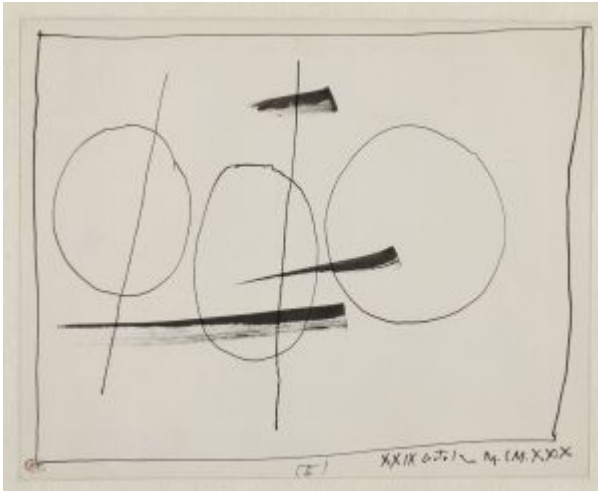
Constellations. [Boisgeloup]. 29-October/1930. India ink on back of catalog page. 17,5 x 21,9 cm. Musée Picasso, Paris. Dation 1979.

OPP.30:095; MPP:1044; PP.30:077;
AB.05a*:n/a; PA.19e*:47

Cercles et signes I. [Boisgeloup]. 29-October/1930. India ink on back of catalogue page. 35,1 x 21,9 cm. Musée Picasso, Paris. Dation 1979.

OPP.30:096; MPP:1038; PP.30:071; AB.05a*:n/a; MP.85:926;
PA.19e*:51; pp.19:44p



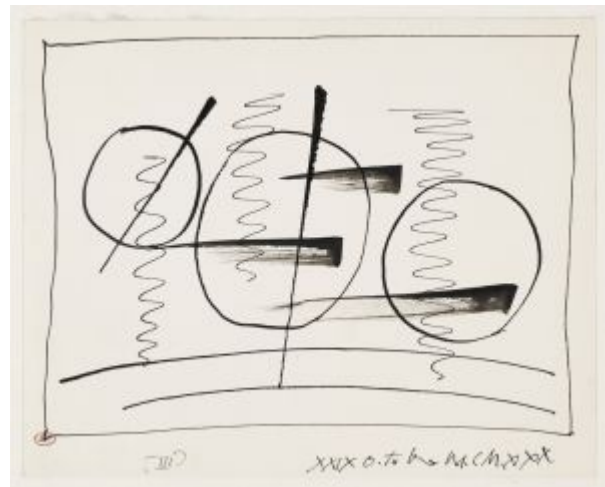


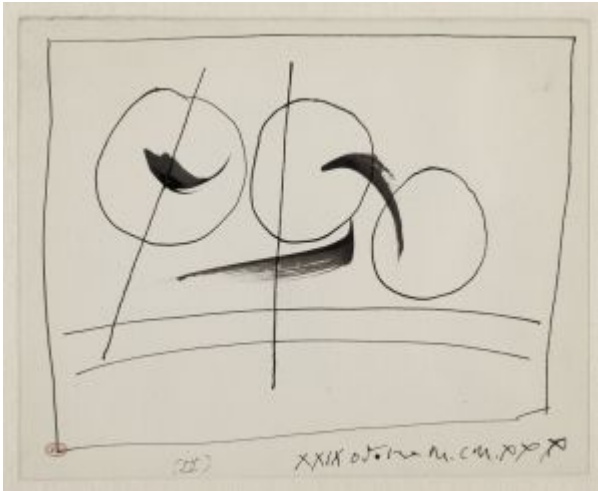
Cercles et signes II. Boisgeloup. 29-October/1930. India ink on back of catalogue page. 17,5 x 22 cm. Musée Picasso, Paris. Dation 1979.

OPP.30:117; MPP:1039; P.IV:240; PP.30:072; MP.85:927; pp.19:44p

Cercles et signes III. Boisgeloup. 29-October/1930. India ink on back of catalogue page. 17,5 x 22 cm. Musée Picasso, Paris. Dation 1979.

OPP.30:118; MPP:1040; P.IV:241; PP.30:073; MP.85:928; PA.19e*:48; PP.19:45p



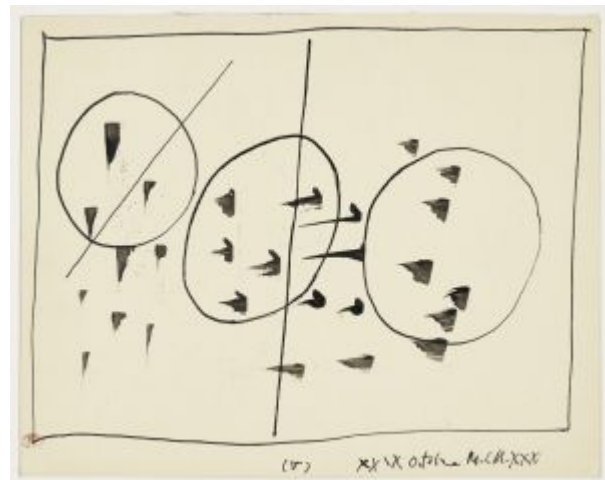


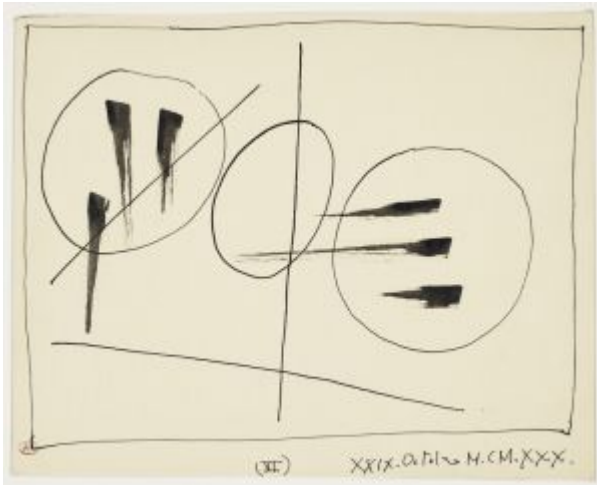
Cercles et signes IV. Boisgeloup. 29-October/1930. India ink on back of catalogue page. 17,6 x 22 cm. Musée Picasso, Paris. Dation 1979.

OPP.30:119; MPP:1041; P.IV:242; PP.30:074; BU.22*:119; BU.22:55p; MP.85:929; PP.19:45p

Cercles et signes V. Boisgeloup. 29-October/1930. India ink on back of catalogue page. 18,2 x 23 cm. Musée Picasso, Paris. Dation 1979.

OPP.30:120; MPP:1042; P.IV:243; PP.30:075; MP.85:930





Cercles et signes VI. Boisgeloup. 29-October/1930. India ink on back of catalogue page. 18,4 x 23 cm. Musée Picasso, Paris. Dation 1979.

OPP.30:121; MPP:1043; P.IV:244; PP.30:076; MP.85:931

Vase, branches de fleurs. Paris. [29]-October/1930. Pen & ink on paper. 22 x 17,6 cm. Sotheby's. #58, L20010, 06/18/20. Formerly Marina Picasso Collection.

OPP.30:179





Le peintre et son modèle devant le tableau.

Boisgeloup. 31-October/1930. Pen & India ink on paper. 23,1 x 28,8 cm. Musée Picasso, Paris. Dation 1979.

OPP.30:073; MPP:1049; PP.30:080; ME.82a*:49; MP.02*:134; PD.06*:n/a; RK.01*:n/a; TK.04*:n/a

Le peintre et son modèle devant le tableau. Boisgeloup. 31-October/1930. Pen & India ink on paper. 23,1 x 28,8 cm. Musée Picasso, Paris. Dation 1979.

OPP.30:093; MPP:1046; P.IV:246; PP.30:079; CK.04*:43; SD.05*:n/a





Le peintre et son modèle. Boisgeloup. 31-October/1930. Pen & India ink on paper. 23,1 x 28,9 cm. Musée Picasso, Paris. Dation 1979.

OPP.30:094; MPP:1045; P.IV:245; PP.30:078; CK.04*:42

Le peintre et son modèle. Boisgeloup. 2-November/1930. India ink on paper. 23,1 x 29 cm. Musée Picasso, Paris. Dation 1979.

OPP.30:064; MPP:1050; P.IV:247; PP.30:081; MP.02*:133; NB.96:15; PD.06*:107p





Le peintre et son modèle. Boisgeloup. 9-November/1930. Pen & India ink on cardboard. 12,1 x 18,5 cm. Musée Picasso, Paris. Dation 1979.

OPP.30:071; MPP:1048; P.IV:249; PP.30:083; PA.79a*:507; RK.01*:n/a; WS.11:78p

Le peintre et son modèle. Boisgeloup. 9-November/1930. Pen & India ink on cardboard. 12,4 x 18,5 cm. Musée Picasso, Paris. Dation 1979.

OPP.30:072; MPP:1047; P.IV:248; PP.30:082; PA.79a*:506





Peintre et modèle. Paris. 25-December/1930.
Pen & ink on paper. 28,1 x 29,2 cm. Sotheby's.
#294, L10007, 06/23/10.

OPP.30:101

Deux femmes. Paris. 1930. Gouache over etching. 38,7 x
30,2 cm. Sotheby's. #9, N08850, 05/02/12.

OPP.30:062; BB.83*:21; MU.86*:n/a; NY.89a*:18





Femme à la mandoline (La musicien). Paris. 1930.
Pochoir [After *Femme à la mandoline (La musicien)*].
24,1 x 17,8 cm. Leslie Hindman Auctioneers. 2007.

OPP.30:063

Nature morte devant une fenêtre. Paris. 1930. Etching
& aquatint in colors, edition 100 [After *Nature morte
devant une fenêtre à Saint-Raphaël*]. 34,7 x 24,7 cm.
Musée Picasso, Paris. Also Sotheby's. #156, L08161,
10/02/08.

OPP.30:065; MPP:3519; YB.08*:10





Ovide, Les Métamorphoses (Méléagre tue le sanglier de Calydon). Paris. [1930]. Pencil on card. 33 x 25,7 cm. Sotheby's. #360, N08486, 11/05/08.

OPP.30:066; GM.50*:61e

Marie-Thérèse au béret et fleur. Paris. [1927~1928~] [1929] 1930. Charcoal on Vergé d'Arches paper. 63 x 48 cm. Private collection.

OPP.30:067; P.IV:78; EC.02:517; EC.16*:115; JR.07:325p; MD.02:170p; PP.19:299p; RP.11*:102p; WR.96:345p





L'Italienne. [Paris]. 1930. Ink wash on paper. 13 x 10 cm.
Private collection, Germany.

OPP.30:070; MD.02*:15p; RD.00*:101

Personnage féminin. Paris. 1930. Welded iron with metal sphere & iron boot tree, toys & string. S/U. Private collection.

OPP.30:102; WS:74; KB.49:22; TH.75:137





Trois femmes dansant sur fond gris. Paris. 1930. Oil on canvas. 64 x 65 cm. Private collection.

OPP.30:114; CG.12*:34; MG.04c*:11

Buste de femme, de dos (Marie-Thérèse) (Paul Éluard, À Pablo Picasso). Paris. [1930]. Lithograph. S/U. Private collection.

OPP.30:116; P.IV:157





Jeune homme et enfant. Paris. 1930. Pochoir [After *Les deux frères*]. 24,6 x 18,2 cm. Goldmark Gallery. 2013.

OPP.30:123

Autoportrait. Paris. [1930]. Gouache on photograph. 4,8 x 3,8 cm. Private collection.

OPP.30:124; RP.11:71p; YP.13*:N





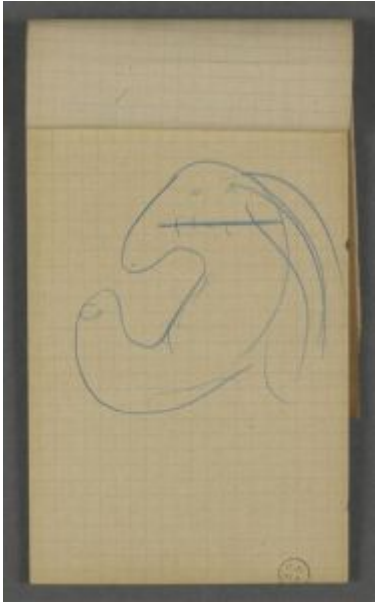
Femme debout. Boisseloup. 1930. Fir wood. 41 cm. Private collection.

OPP.30:130; WS:87.I; RP.11*:123p

Abstraction. Paris. 1930. Pochoir [After *Fillette au cerceau*].
31 x 21 cm. Musée Picasso, Paris. Also The Baltimore
Museum of Art. The Cone Collection, formed by Dr. Claribel
Cone and Miss Etta Cone of Baltimore, Maryland.

OPP.30:131; MPP:3517





Croquis sur un calepin d'une tête de femme au crayon bleu.
Paris. [1930]. Color pencil on paper. S/U. Musée Picasso, Paris.

OPP.30:156

Armature de sculpture. Boisgeloup. 1930. Twisted wire, plaster & wood with iron support, nailed to wood base. 80 x 60 x 110 cm. Fundación Almine & Bernard Ruiz-Picasso para el Arte.

OPP.30:172; RU.17*:6





Marie-Thérèse avec son chien Dolly. Cité d'Alfort. 1930. Gelatin silver print. 9 x 12,8 cm. Maya Widmaier Picasso Collection, Paris.

OPP.30:175; RU.17:82p

Tête de jeune homme. Paris. [1930]. Lithograph [After *Tête de jeune homme*]. 19,6 x 26,6 cm. Private collection.

OPP.30:180



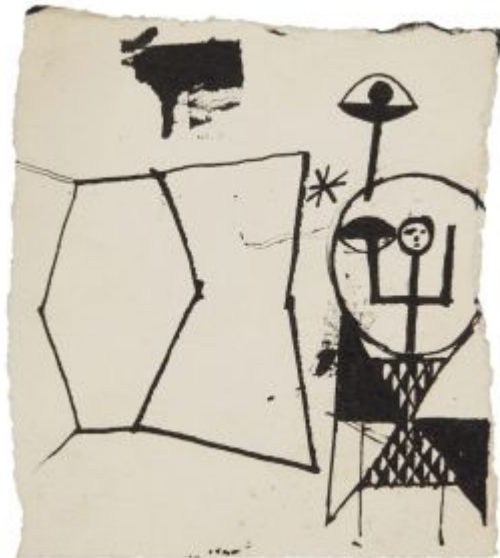


Étude de femmes étendues. Paris. 1930. Pen & blue ink on paper. 23 x 16,5 cm. Sotheby's. #29, L22005, 05/04/022. Formerly Pierre Le Guennec Collection, France.

OPP.30:215

Étude de tête. Paris. [1930]. Pen & ink on paper [Obverse of *Nu couché*]. 11 x 9,5 cm. Sotheby's. #30, L22005, 05/04/22. Formerly Pierre Le Guennec Collection, France.

OPP.30:216





Nu couché. Paris. [1930]. Pen & ink on paper [Reverse of *Étude de tête*]. 11 x 9,5 cm. Sotheby's. #30, L22005, 05/04/22. Formerly Pierre Le Guennec Collection, France.

OPP.30:217

Femme debout. Boisgeloup. 1930. Bronze [Cast after *Femme debout*]. 50 cm. Private collection.

OPP.30:232; PP.30:050; WS:88.II; KB.49:39





Femme debout. Boisseloup. 1930. Bronze [Cast after *Femme debout*]. 31 cm. Private collection.

OPP.30:233; PP.30:052; WS:89.II; KB.49:34

Femme debout. Boisseloup. 1930. Bronze [Cast after *Femme debout*]. 47 cm. Private collection.

OPP.30:234; PP.30:054; WS:91.II; KB.49:33





Femme debout. Boisgeloup. 1930. Bronze [Cast after *Femme debout*]. 19,5 cm. Private collection.

OPP.30:235; PP.30:056; WS:91; KB.49:24

Buste de femme. Boisgeloup. 1930. Bronze [Cast after *Buste de femme*]. 12,5 cm. Private collection.

OPP.30:236; PP.30:085; WS:102.II; KB.49:74





Femme debout. Boisseloup. 1930. Bronze with brown patina [Cast after *Femme debout*]. 48,5 cm. Christie's. #356, 18342, 02/06/20. Formerly Marina Picasso Collection. (Inv 55249).

OPP.30:237; PP.30:062; PP.31:041; WS:97.II; GB.87:137; JF.96:104p; MP.81*:151; MP.85:321; PA.36b*:n/a; PD.02*:55

Femme assise. Boisseloup. 1930. Bronze [Cast after *Femme assise*]. 17 cm. Private collection.

OPP.30:238; PP.30:066; WS:99.II; KB.49:42



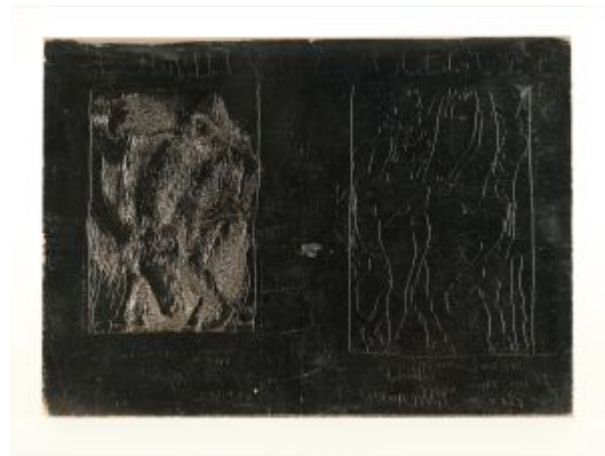


Deux femmes nues assises. Boisgeloup. 1930. Etching. 25,4 x 18,5 cm. Museu Picasso, Barcelona. Gift of Jaume Sabartés, 1962.

OPP.30:239; MPB:70.233

Ex-libris pour Max Pellequer. Paris. 1930. Original engraved copper. 14 x 19,5 cm. Piasa. #49, 2142, 02/15/24. Formerly Max Pellequer Collection.

OPP.30:240





Ex-libris pour Max Pellequer. Paris. 1930.
Original etching. 13,5 x 9,4 cm. Piasa. #50, 2142,
02/15/24. Formerly Max Pellequer Collection.

OPP.30:241

Ovide, Les Métamorphoses (Trois femmes tuant un taureau). Paris. 1930. Etching. 31,5 x 22,2 cm. Private collection.

OPP.30:263; B.I:1319; Ba:181bis





Nature morte. Paris. 1930. Wool rug. 142,3 x 200 cm. Christie's. #50, 1443, 12/08/04.

OPP.30:042; BK.92*:n/a

Buste de femme. Paris. 1930. Aquatint printed in colors, edition 125 [After *Buste de femme*]. 55 x 45 cm. Sotheby's. #264, N08087, 04/29/05.

OPP.30:043





Maternité. Paris. 1930 [1962]. Aquatint printed in colors, edition 200 [After *Mère et enfant*]. 90 x 64 cm. Sotheby's. #257, N08193, 04/28/06.

OPP.30:051

Baigneuse au pouf rouge. Paris. 1930~1931. Oil & gouache over etching. 38,7 x 30,2 cm. Sotheby's. #8, N08850, 05/02/12.

OPP.30:115; BB.83*:20; NY.89a*:17





Femme debout. Boisseloup. [1930~1931]. Bronze [Cast after *Femme debout*]. 48,3 x 17,8 x 4,4 cm. Sotheby's. #56, N10460, 11/19/20. Julie and Edward J. Minskoff Collection.

OPP.30:109; PP.30:070; WS:87.II; MI.01*:80; RP.11*:126p

Femme. Boisseloup. [1930~1931]. Bronze [Cast after *Femme assise*]. 54,6 x 5,1 x 2,3 cm. Dee Dee and Herb Glimcher Collection. Also Sotheby's. #143, N11157, 05/16/23.

OPP.30:110; PP.30:048; WS:86.II; AB.46:172p; MI.01*:79; NY.41d*:n/a; PA.36b*:n/a; PH.45*:n/a; PH.52*:n/a; RR.82*:6; YB.08*:40





Femme. Boisgeloup. [1930~1931]. Bronze. 17,5 x 1,4 x 2,5 cm. Private collection.

OPP.30:111; PP.30:064; WS:93.II; MI.01*:77

Femme assise. Boisgeloup. [1930~1931]. Bronze [Cast after *Femme assise*]. 16 cm. Fundación Almine & Bernard Ruiz-Picasso para el Arte.

OPP.30:112; PP.30:068; WS:100.II; CG.04*:93; LW.15*:68p; MG.04b*:67; MI.01*:76; RP.11*:131p; RU.17*:56





Femme sur socle. Boisgeloup. [1930~1931]. Painted bronze (green patina) [Cast after *Femme debout*]. 47 x 5,5 x 2,8 cm. Fundación Almine & Bernard Ruiz-Picasso para el Arte.

OPP.30:113; PP.30:060; WS:95.II; CG.04*:92; HA.02*:52; LW.15*:69p; MG.04b*:65; MI.01*:78; PA.36b*:n/a; RP.11*:132p; RU.17*:58

Couple. Boisgeloup. [1930~1931]. Bronze [Cast after *Couple*]. 10,5 x 3,5 x 2,2 cm. Private collection.

OPP.30:125; PP.30:087; WS:103.II; HN.00*:107; JC.01a*:102; KB.49:26





Femme debout. Boisgeloup. [1930~1931]. Bronze [Cast after *Femme debout*]. 20 cm. Private collection.

OPP.30:128; PP.30:046; WS:101.II; RP.11*:129p; YB.08*:41

Femme debout. Boisgeloup. [1930~1931]. Bronze [Cast after *Femme debout*]. 49,5 x 2,3 x 2,3 cm. Private collection.

OPP.30:139; PP.30:058; WS:94.II; KB.49:36; PA.36b*:n/a





Femme debout. Boisseloup. [1930~1931]. Bronze [Cast after *Femme debout*].
47 x 3 x 5 cm. Fundación Almine & Bernard Ruiz-Picasso para el Arte.

OPP.30:140; WS:90.II; CG.04*:91; LW.15*:69p; MG.04b*:66; RU.17*:57